



The EL-USB-1 temperature data logger measures and stores up to 16,382 temperature readings over a -35 to +80°C (-31 to +176°F) range. Easily set up the logging rate and start-time, and download the stored data by plugging the data logger into a PC's USB port and running the purpose-designed software that allows you to easily graph, print and export data to other applications. The EL-USB-1 data logger is supplied with a long-life lithium battery which can typically allow logging for more than 1 year. Function and alarm states are indicated by flashing red, green and orange LEDs. The data logger is protected against moisture to IP67 standard when the protective cap is fitted.

## Features

- -35 to +80°C (-31 to +176°F) Measurement Range
- USB Interface for Set-up and Data Download
- 2 User-Programmable Alarm Thresholds
- Bright Red, Green and Orange LED Indication
- Replaceable Internal Lithium Battery
- IP 67 Protection (totally protected against dust; protected against liquid immersion up to 1m)

## Programmable Elements

- Logger Name
- °C, °F
- Logging Rate (10s, 1m, 5m, 30m, 1hr, 6hr, 12hr)
- High and Low Alarms
- Start Date and Start Time

## Record Times

Sampling Interval	Record Times
1 sample every 10 seconds	45 hours
1 sample every minute	11 days
1 sample every 5 minutes	56 days
1 sample every 30 minutes	11 months
1 sample every hour	1.8 years
1 sample every 6 hours	> 2 years
1 sample every 12 hours	> 2 years

## LED Flashing Modes

The EL-USB-1 data logger features 2 LEDs: The first LED flashes green or red to indicate alarm level status; The second LED flashes orange to indicate a problem condition on the EL-USB-1.


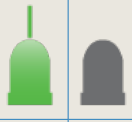



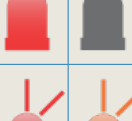
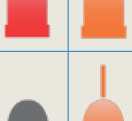
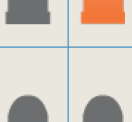

The logger will flash red when the logged temperature has exceeded a Low or High alarm level. “Hold” mode is disabled by default. In this mode the red LED will no longer continue to flash after the logged temperature has returned to normal from an alarm condition.

“Hold” can be turned on via the control software. In this mode, the red LED that indicates an alarm condition will continue to flash, even after the logged temperature has returned to normal. The red LED will effectively be held in its alarm condition. This ensures that the user is notified that an alarm level has been exceeded, without the need to download the data from the logger.



Red/Green LED

Orange LED

	<b>Green Double Flash</b> The data logger is not currently logging, but is primed to start at a later date and time (delayed start).
	<b>Green Single Flash</b> The data logger is currently logging. No alarm.
	<b>Green and Orange Single Flash</b> The data logger is full and has stopped logging. No alarm.
	<b>Red Single Flash</b> The data logger is currently logging. Low alarm.
	<b>Red and Orange Single Flash</b> The data logger is full and has stopped logging. Low alarm.
	<b>Red Double Flash</b> The data logger is currently logging. High Alarm.
	<b>Red and Orange Double Flash</b> The data logger is full and has stopped logging. High alarm.
	<b>Orange Single Flash</b> The battery is running low as its voltage has dropped below 3.3V. Data logging will continue until the battery voltage drops below 2.8V.
	<b>No LEDs Flash</b> The data logger is stopped, the battery is dead, or there is no battery.

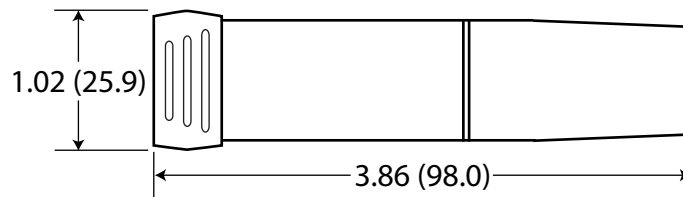
## Accessories and Options

### Optional Case

Rugged metal alloy design for harsh conditions. Waterproof to IP-67/NEMA-4X



## Dimensions



Dimensions shown are inches (mm)

## Specifications

Specification	Minimum	Typical	Maximum	Unit
Measurement Range	-35 (-31)		+80 (176)	°C (°F)
Internal Resolution		0.5 (1)		°C (°F)
Accuracy (overall error)		±1 (±2)		°C (°F)
Logging Rate	every 10s		every 12hr	-
Memory Capacity		16,382		samples
Operating Temperature Range	-35 (-31)		+80 (176)	°C (°F)
Battery Life	1*			Year

\*@ 25 °C and 1m logging interval.

## EL-USB-1 Ordering Information

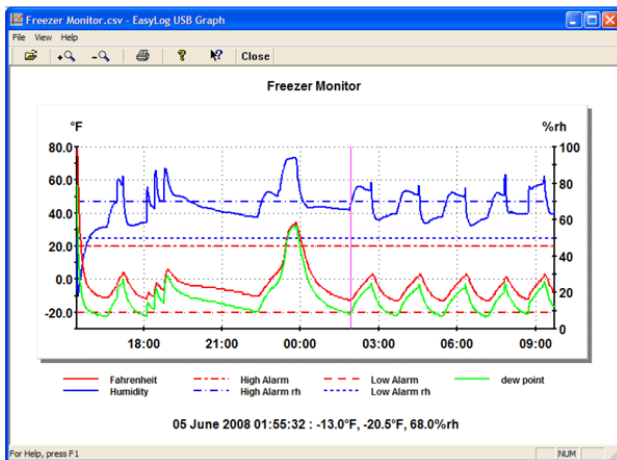
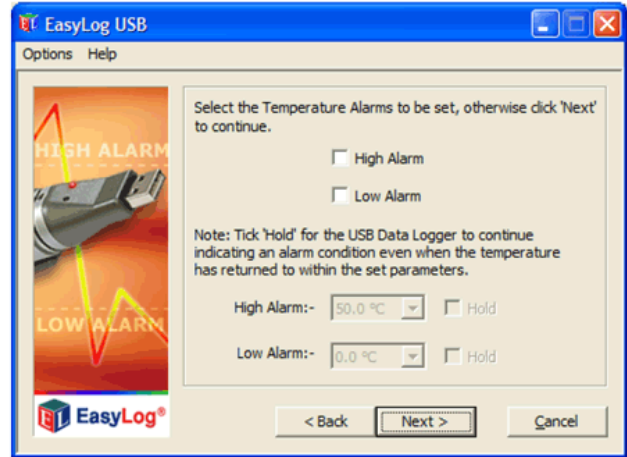
Description	Order Number
<b>Temperature Data Logger</b> Includes EL-USB-1 data logger, software on CD, and battery.	<b>EL-USB-1</b>
<b>Battery</b> Replacement battery.	<b>BAT 3V6</b>
<b>Case</b> Rugged metal alloy design for harsh conditions. Waterproof to IP-67/NEMA-4X	<b>EL-USB-CASE</b>

## Easy to Program and Deploy

Getting an EasyLogger product ready to acquire data is simple:

1. Remove the protective USB cover.
2. Plug the instrument into any convenient USB port (image 1).
3. Program the data logger with the provided EasyLog software (image 2):
  - Give the logger a unique name (convenient when deploying multiple units).
  - Select the required sample rate.
  - Select high and/or low alarm thresholds.
  - Select the specific date and time to begin logging.

Now remove the data logger from the USB port, replace the USB cover, and deploy the instrument wherever you need it.



Time	Fahrenheit(°F)	High Alarm	Low Alarm	Humidity(%rh)	High Alarm rh	Low Alarm rh	dew point(°F)
4/6/2008 15:26	77	20	-20	50	70	50	56.9
4/6/2008 15:27	79	20	-20	25.5	70	50	40.7
4/6/2008 15:28	75	20	-20	20.5	70	50	31.9
4/6/2008 15:29	66	20	-20	19	70	50	22.6
4/6/2008 15:30	56	20	-20	20	70	50	15.6
4/6/2008 15:31	48	20	-20	22	70	50	11.1
4/6/2008 15:32	40	20	-20	24	70	50	6.2
4/6/2008 15:33	34	20	-20	25.5	70	50	2.4
4/6/2008 15:34	28	20	-20	27	70	50	-1.6
4/6/2008 15:35	24	20	-20	28.5	70	50	-3.9
4/6/2008 15:36	20	20	-20	30.5	70	50	-6
4/6/2008 15:37	16	20	-20	32.5	70	50	-8.2
4/6/2008 15:38	13	20	-20	34	70	50	-10
4/6/2008 15:39	11	20	-20	35	70	50	-11.2
4/6/2008 15:40	9	20	-20	37	70	50	-11.9
4/6/2008 15:41	7	20	-20	38.5	70	50	-12.9
4/6/2008 15:42	5	20	-20	39.5	70	50	-14.2
4/6/2008 15:43	4	20	-20	41	70	50	-14.4

## Easy to Upload and Analyze Data

Whether you want to review stored data using the supplied application or using Microsoft Excel, getting meaningful results from recorded data is fast and easy:

1. Remove the protective USB cover.
2. Plug the instrument back into the PC's USB port.
3. Use EasyLog software to stop recording, access the instrument's stored data, and save it to a file that you name on the PC, all in one easy operation. The file format is Excel-compatible.
4. Immediately EasyLog's Graph utility is enabled to display all the stored data in one compressed view.
5. A cursor allows you to determine signal magnitude and time and date of acquisition for any value, and a magnifier utility allows you to zoom in for a closer look over any range – Easy and fast.
6. For more custom analysis and report generation, simply import the stored data file to Microsoft Excel for virtually unlimited flexibility in how you view and interpret your results.

## 2.8 inch Full color touch-screen display

Easy-to-use menu to Set Up data loggers; Download data from logger; View Data; and Instrument settings (Time/Date, Power, Status)



## On/Off button

ON = Single press

OFF = Press and hold for 3 seconds

The EL-DataPad allows users of certain EL-USB data loggers to configure their units, upload data, and view logging results on-the-spot rather than moving the logger to their PC. This allows shorter breaks in data collection for more data continuity, less travel time, and on-the-spot data review and data logger reconfiguration.

The logger is connected to the EL-DataPad via a standard USB port at the top of the viewer. Once connected, you are guided through a simple touchscreen menu with options to Set-Up Logger, Stop Logger & Download and View Data. On-screen instructions follow the same structure as EL-USB-WIN software for the PC currently provided with each data logger.

Data from up to 100 loggers can be viewed on the EL-DataPad, with data from a further 400 units stored on the unit at any one time. Data can be transferred to a PC using a micro USB cable supplied with the unit. Once uploaded, data is saved in comma separated variable (csv) format, making it suitable for import into spreadsheet programs such as Microsoft Excel or graphed on a PC using EL-WIN-USB software.

## Features

- Archive capacity for up to 500 logger uploads
- View uploaded data with general trend and summary reports
- Allows full or quick set-up of compatible EL-USB data loggers
- Touch screen interface for navigation of menus
- 2.8 inch full color TFT display
- Stored data can be transferred to a PC via micro USB cable
- Rechargeable internal built-in lithium battery provides up to 8 hours of use between charges

## Compatible EL-USB Data Loggers

The EL-DataPad is compatible with the following Data Loggers:

- EL\_USB-LITE
- EL-USB-1
- EL-USB-1-LCD
- EL-USB-1-PRO
- EL-USB-2
- EL-USB-2+
- EL-USB-2-LCD
- EL-USB-2-LCD+
- EL-USB-TC
- EL-USB-TC-LCD

# EL-USB Data Logger Series Overview

## EasyLog Products for Any Application

From temperature and humidity to carbon monoxide trending, there's an EasyLog data logger that's right for you. Click on "Go" to go to the product's web page.

Measurement		Model EL-USB (click on page number to jump to page)																		
Function	Range	-LITE	-1	-1-LCD	-1-RCG	-1-PRO	-2	-2+	-2-LCD	-2-LCD+	-3	-4	-5	-ACT	-CO	-TC	-TC-LCD	-TP-LCD	-TP-LCD+	
Temperature	-10 to +50°C (+14 to +122°F)	<a href="#">Go</a>																		
Temperature	-35 to +80°C (-31 to +176°F)		<a href="#">Go</a>	<a href="#">Go</a>																
Temperature	-20 to +60°C (-4 to +140°F)				<a href="#">Go</a>															
High Temperature	-40 to +125°C (-40 to +257°F)					<a href="#">Go</a>												<a href="#">Go</a>	<a href="#">Go</a>	
Humidity, temperature, dew point	0 to 100% RH -35 to +80°C (-31 to +176°F)						<a href="#">Go</a>	<a href="#">Go</a>	<a href="#">Go</a>	<a href="#">Go</a>										
Voltage	0 to 30 VDC										<a href="#">Go</a>									
Process current	4 to 20 mA											<a href="#">Go</a>								
Event, State, Count	3-28 VDC												<a href="#">Go</a>							
Current	-1000 to 1000 mV													<a href="#">Go</a>						
Carbon monoxide	0 to 1000 ppm														<a href="#">Go</a>					
Thermocouple	-130 to +900°C -200 to +1300°C -200 to +350°C															<a href="#">Go</a>	<a href="#">Go</a>			

# Lascar Data Logger Product Lines

## EL-USB Data Loggers



Lascar EasyLog model EL-USB series products are a line of low cost, compact, battery-operated data loggers with built-in memory and a USB interface for easy setup and data download. Each product in the line offers a specific measurement function (including temperature, voltage, process current, and more).

## EL-GFX Data Loggers



The EL-GFX line of data loggers is the latest release from Lascar Electronics with similar functionality of the EL-USB series with an added graphic display for data.

## EL-WiFi Data Loggers



Lascar's EL-Wifi Data Logger series products are low cost, compact, battery-operated data loggers with wireless connectivity to any PC over a WiFi router. Each product in the line features a large, easy-to-read display of current measurements, and is purchased for specific measurement functions.



241 Springside Drive  
Akron, Ohio 44333  
Phone: 330-668-1444  
Fax: 330-666-5434

## **Data Acquisition Product Links**

(click on text to jump to page)

[Data Acquisition](#) | [Data Logger](#)