

Installation Guide



Installation Instructions for Models:

DI-148 Series
DI-158 Series
DI-710 Series
DI-715B Series
DI-718B(x) Series

Revision G

DI-148, DI-158, DI-71x USB and Ethernet Installation with WINDAQ[®] Acquisition and Playback Software

SYSTEM REQUIREMENTS

Hardware	Intel or compatible PC
Operating System	Windows XP, Vista, and 7
Disk Space	40MB plus space for recorded data

This installation guide explains how to install all DATAQ Instruments DI-148, DI-158, DI-710, DI-715B, DI-718B, and DI-718Bx products to your PC.

Table of Contents

Section A: USB Device Installation.....	3
Section B: Ethernet Device Installation.....	6
Section C: Installing an Ethernet device directly connected to your PC or connected via a hub or switch where ONLY DI-71x products are installed..	8
Section D: Installing an Ethernet device via a distributed network without a DHCP server	11
Section E: Installing an Ethernet device via a distributed network with a DHCP server	13
Section F: Activation of WINDAQ/High Speed Option.....	14
Section G: DATAQ Instruments Hardware Manager	14
Section H: Documentation and Support	15

Section A: USB Device Installation

IMPORTANT: Disconnect all DATAQ Instruments USB devices from your PC before continuing with installation.



Once all devices are disconnected, install WINDAQ Software and the DATAQ Instruments Hardware Manager.

1. Insert the *WINDAQ Resource CD* in your drive. The installation software should start automatically within 20 seconds. If it does not, start it manually by double-clicking the Setup application (*setup.exe*) located on the root of the *WINDAQ Resource CD*.
2. In the “What do you want to do?” window, select “Install Software” and click **OK**.
3. In the “Installing Software” window, select the “Install Software for DI-148, DI-158, DI-710, DI-715B, and DI-718B(x) instruments” option and click **OK**.
4. In the “WinDaq Installation” dialog box, select the “Install WinDaq

Software” option and click **OK** to continue. If you wish to view the hardware documentation you may do so now by clicking on the appropriate radio button. Documentation will be saved to your hard drive during this installation.

5. In the “Welcome!” box, click **OK** to continue.
6. Read the License Agreement. If you accept the terms, click **Accept and Continue**. If you choose not to accept, click on the **Do not accept and stop** button to end the installation.
7. When prompted, enter your registration information (name and company) in the appropriate text boxes and click **OK**. Confirm your registration information before continuing.
8. When prompted, specify the directory where you want to install your WINDAQ software. It is recommended that you accept the default. If you have already successfully installed a DI-148, DI-158, DI-710, DI-715B, or DI-718B instrument be sure to install to the same folder.
9. In the “Select an Interface” box select **USB** and click **OK**.
10. DO NOT connect your USB device or cable to your PC until installation is complete. If your device is currently connected, please disconnect it before continuing with this installation. Once your device is disconnected, click the **OK** button.
11. When prompted to Select a Program Manager Group specify a destination (or group window) in the Start Menu for WINDAQ software icons. It is recommended that you accept the default.
12. In the “Installation Option” dialog box specify whether you want all users to have access to WINDAQ software or just the current User. Click **Yes** to allow all users to have access, click **No** to allow just the current user to have access.
13. After WINDAQ Software installs, you will be prompted to install WINDAQ/XL Trial Version and Advanced CODAS Analysis software. If you wish to install either software click on **Yes** in the appropriate dialog box. Follow the on screen prompts to complete installation.
14. Software installation is complete - you will now see a “Successful Installation” box - click **OK** to exit WINDAQ Installation.

You can now plug the device(s) into your PC and apply power (if required). You do not need to re-install this software when installing more DI-148, DI-158, or DI-71x USB devices to your PC. If you are installing Ethernet devices you **MUST** run the Ethernet installation (see Section B: Ethernet Device Installation).

1. Plug the appropriate end of the supplied USB communications cable into the USB port on the instrument.
2. Connect the other end of the USB cable to one of your computer's USB ports.

NOTE: Use a powered USB hub or a USB port on your PC – Non-powered USB hubs may not have sufficient power to run the instrument.

3. Apply power via the AC adapter (if required).

Click on the appropriate program group (specified above — default is Start > Programs > WINDAQ) and click on “DATAQ Instruments Hardware Manager” to run WinDaq software. All DATAQ Instruments software is located in the same program group.

Section B: Ethernet Device Installation

Install WINDAQ Software and the DATAQ Instruments Hardware Manager.

1. Insert the *WINDAQ Resource CD* in your drive. The installation software should start automatically within 20 seconds. If it does not, start it manually by double-clicking the Setup application (*setup.exe*) located on the root of the *WINDAQ Resource CD*.
2. In the “What do you want to do?” window, select “Install Software” and click **OK**.
3. In the “Installing Software” window, select the “Install Software for DI-148, DI-158, DI-710, DI-715B, and DI-718B(x) instruments” option and click **OK**.
4. In the “WinDaq Installation” dialog box, select the “Install Software” option and click **OK** to continue. If you wish to view the full hardware documentation you may do so now by clicking on the appropriate radio button. Documentation will be saved to your hard drive during installation.
5. In the “Welcome!” box, click **OK** to continue.
6. Read the License Agreement. If you accept the terms, click **Accept and Continue**. If you choose not to accept, click on the **Do not accept and stop** button to end the installation.
7. When prompted, enter your registration information (name and company) in the appropriate text boxes and click **OK**. Confirm your registration information before continuing.
8. When prompted, specify the directory where you want to install your WINDAQ software. It is recommended that you accept the default. If you have already successfully installed a DI-148, DI-158, DI-710, DI-715B, or DI-718B instrument be sure to install to the same folder.
9. In the “Select an Interface” box select the Ethernet option and click **OK** to continue.
10. When prompted to Select a Program Manager Group specify a destination (or group window) in the Start Menu for WINDAQ software icons. It is recommended that you accept the default.

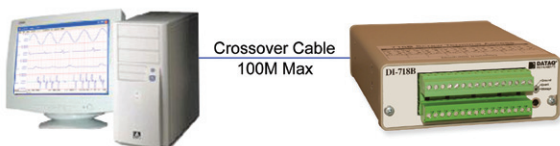
11. In the “Installation Option” dialog box specify whether you want all users to have access to WINDAQ software or just the current User. Click **Yes** to allow all users to have access, click **No** to allow just the current user to have access.
12. After WINDAQ Software installs, you will be prompted to install WINDAQ/XL Trial Version and Advanced CODAS Analysis software. If you wish to install either software click on **Yes** in the appropriate dialog box. Follow the on screen prompts to complete installation.
13. Installation is complete - you will now see a “Successful Installation” box - click **OK** to exit WINDAQ Installation.

Ethernet devices can now be connected to your network or PC. Follow the appropriate instructions in *Section C: Installing an Ethernet device directly connected to your PC or connected via a hub or switch where ONLY DI-71x products are installed*, *Section D: Installing an Ethernet device via a distributed network without a DHCP server*, or *Section E: Installing an Ethernet device via a distributed network with a DHCP server* of this manual for your specific network connections configuration.

Click on the appropriate program group (specified above — default is Start > Programs > WINDAQ) and click on “DATAQ Instruments Hardware Manager” to run WINDAQ software. All DATAQ Instruments software is located in the same program group.

Section C: Installing an Ethernet device directly connected to your PC or connected via a hub or switch where ONLY DI-71x products are installed

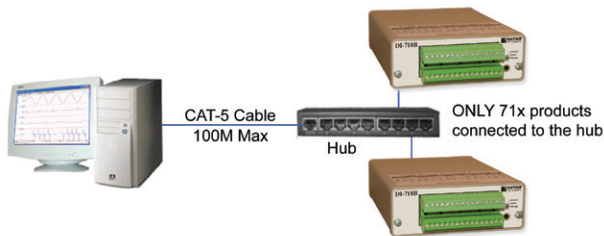
Installation of an Ethernet device directly connected to the network card on your computer requires you to change the IP address of your network card.



NOTE: When installing your Ethernet device directly connected to your PC you **MUST** use a crossover cable (provided). For hubs (below) that do not have an auto-switching sensor you must **NOT** use a crossover cable.

NOTE: You **MUST** disable all wireless connections during installation. Wireless connections can be re-enabled once installation is complete.

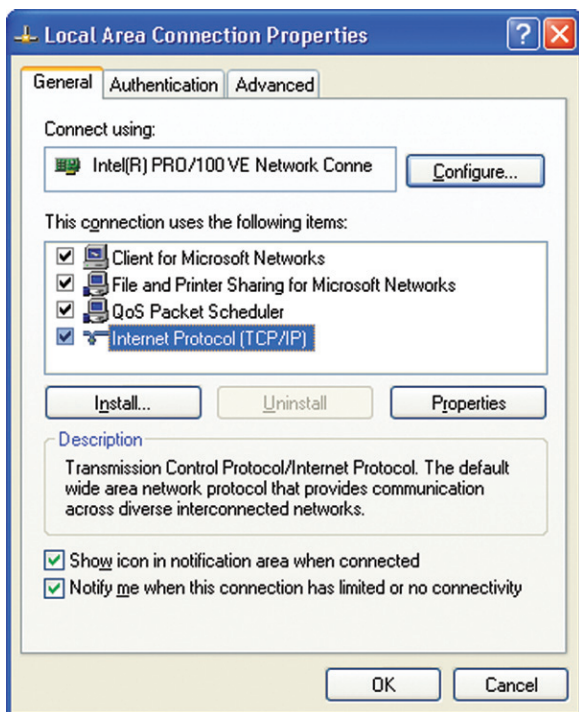
Installation of an Ethernet device via an Ethernet hub/switch containing ONLY DI-71x products also requires you to change the IP address of your network card.



1. Find the **Network Connections** on your computer (usually in the Control Panel).
2. Double-click on the **Local Area Connection** icon.

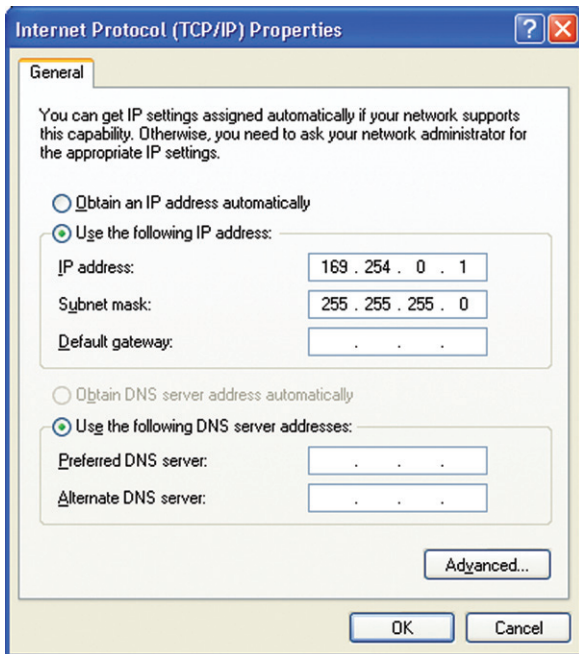


3. Click on the **Properties** button.
4. Select **Internet Protocol (TCP/IP)** in the “This connection uses the following items” window and click on the **Properties** button.



5. Click on the **General** tab.
6. Select the radio button **Use the following IP address**.
7. Enter 169.254.0.1 in the space provided for the **IP address**.

- Enter 255.255.255.0 in the space provided for the **Subnet mask**.

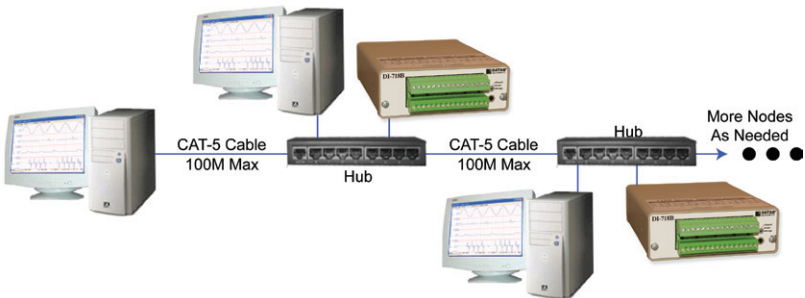


- Click on the **OK** button to close the *Internet Protocol (TCP/IP) Properties* dialog box then click on the **OK** button in the *Local Area Connection Properties* dialog box for the changes to take effect.
- You will now be able to see the device in the DATAQ Instruments Hardware Manager (you may have to click the **Update List** button).

NOTE: If you unplug your device and connect your PC to a network or router you should change these settings back to their original state.

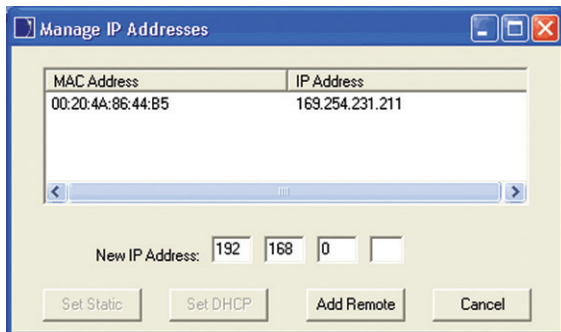
Section D: Installing an Ethernet device via a distributed network without a DHCP server

Installation of an Ethernet device connected to a distributed network that does not have a DHCP server or where the DHCP server is turned off requires you to obtain an IP address from your system administrator.



NOTE: In the illustration above, the Hubs could instead be routers with DHCP turned off (i.e., a static IP assigned network). Contact your system administrator for details about your network.

1. Have the system administrator designate an IP address for your device.
2. Install software (see Section B: Ethernet Device Installation).
3. Plug the device into your network and apply power.
4. Open the DATAQ Instruments Hardware Manager software.
5. In the dropdown command list (lower left-hand corner), select **Static IP**. The Manage IP Addresses dialog box will open.

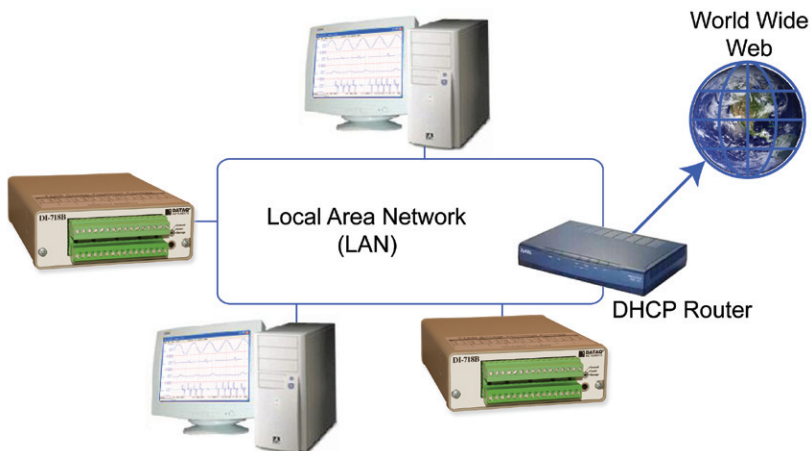


6. Click on the MAC address of your device in the list of displayed MAC addresses (the MAC address of your device can be found on the silver sticker located on the bottom of your device).
7. Enter the IP address your system administrator assigned to you in the **New IP Address** text boxes.
8. Click on the **Set Static** button. Your device will appear in the list of available devices in the main DATAQ Instruments Hardware Manager window. It may take more than 15 seconds for your device to appear in the list. If you get a “No Devices Found” error after following the above instructions, click the **Update List** button until the device appears in the list.

NOTE: These instructions change the settings inside the device. If you move the device to a DHCP-enabled network (i.e., where IP addresses are assigned automatically by a DHCP server or router) you will need to change the device settings using the DATAQ Instruments Hardware Manager. See the DATAQ Instruments Hardware Manager help file for complete details.

Section E: Installing an Ethernet device via a distributed network with a DHCP server

Installation of an Ethernet device connected to a distributed network that has a DHCP server (i.e., a DHCP router automatically assigns IP addresses to each device connected to the network) requires no extra setup.



NOTE: If you are unsure whether your network is DHCP-enabled or not, check with your system administrator *before* installing WINDAQ.

1. Connect your Ethernet device to your Local Area Network.
2. Apply power to the device.
3. You will now be able to see the device in the DATAQ Instruments Hardware Manager (you may have to click the **Update List** button).

Section F: Activation of WINDAQ/High Speed Option

Activation is required for continued use of WINDAQ/HS (High Speed option) to ensure compliance with the Software License Agreement. The Software License Agreement can be found in the WINDAQ Software manual or in the WINDAQ program group (License.txt). WINDAQ/HS may be activated through the **Help** menu by clicking on **Unlock WINDAQ/HS** in the Acquisition software, or by waiting for the trial version to expire. Trial versions are good for a number of High Speed (over 1108 Hz throughput) recording sessions. The High Speed version may be purchased after the trial period expires through our online store or by phone. For help or for questions regarding Activation and/or the Software License Agreement, contact DATAQ Instruments Customer Support (see Section H: Documentation and Support below).

Section G: DATAQ Instruments Hardware Manager

The DATAQ Instruments Hardware Manager is installed when installing WINDAQ Software. The Hardware Manager allows you to effectively manage and run multiple instruments installed and connected to your PC or your Network — or even over the internet. WINDAQ Data Acquisition Software and the Stand-alone Set Up program are both accessed through the DATAQ Instruments Hardware Manager. The DATAQ Instruments Hardware Manager may be accessed through the Windows Program Manager Group as specified during installation (default is *Start > Programs > WINDAQ > DATAQ Instruments Hardware Manager*). All available devices will automatically appear in the list box when you run the software. For help with the DATAQ Instruments Hardware Manager access the Help Files using either the Help menu item or by highlighting a menu item and pressing **F1** to access context-sensitive help.

Section H: Documentation and Support

Full Hardware documentation is available from the Windows Program Group designated during installation (default is *Start > Programs > WINDAQ > Documentation > DI-xxx Hardware Manual*).

A Fast Start guide with multimedia demonstrations is available after installation from the Windows Program Group designated during installation (default is *Start > Programs > WINDAQ > Documentation > Multimedia Fast Start Guide to WinDaq Software*) or from your hard drive at *C:\Windows\Help\Multimedia Fast Start Guide to WinDaq Software.pdf*.

Context-sensitive Help is available in all software programs. Highlight a menu item and press **F1** for help regarding that menu item or click on the **Help** menu item to access the help files.

Installation: <http://www.dataq.com/support/techinfo/articles/index.htm>

Support Forum: <http://support.dataq.com>

Submit a Support Ticket: <http://www.dataq.com/ticket>

Phone: 330-668-1444 Monday through Friday 8AM to 5PM EST



DATAQ Instruments, Inc.
241 Springside Drive
Akron, Ohio 44333 U.S.A.
Telephone: 330-668-1444
Fax: 330-666-5434

www.dataq.com

Designed and manufactured in the
United States of America

Copyright © 2011 by DATAQ Instruments, Inc.

DATAQ Instruments' hardware and software products are not designed to be used in the diagnosis and treatment of humans, nor are they to be used as critical components in any life-support systems whose failure to perform can reasonably be expected to cause significant injury to humans.

DATAQ, the DATAQ logo, and WINDAQ are registered trademarks of DATAQ Instruments, Inc. All rights reserved.