



DEWETRON



EPAD2/CPAD2/CPAD3 SERIES MODULES

TECHNICAL REFERENCE MANUAL



WELCOME TO THE WORLD OF DEWETRON!

Congratulations on your new device! It will supply you with accurate, complete and reproducible measurement results for your decision making.

Look forward to the easy handling and the flexible and modular use of your DEWETRON product and draw upon more than 25 years of DEWETRON expertise in measurement engineering.



ISO9001



CUSTOMIZED



MODULAR



COMPETENT



COMMITTED



APPROVED

Copyright © DEWETRON GmbH

This document contains information which is protected by copyright. All rights are reserved. Reproduction, adaptation, or translation without prior written permission is prohibited, except as allowed under the copyright laws.

All trademarks and registered trademarks are acknowledged to be the property of their owners.
DEWESoft™ is a trademark of Dewesoft d.o.o

Content

General Information, Safety Instructions	5
Warranty Information	5
Support	5
Printing History.....	5
Safety symbols in the manual	6
Safety instructions for all DEWETRON systems	7
Environmental Considerations	8
General module information	9
Calibration information	9
General module specifications	9
EPAD2-USB Module	11
Module specifications	11
Connection	13
Installing USB drivers	14
How to setup EPAD2-USB in DASyLab	14
How to setup EPAD2-USB in DEWESoft™.....	15
CPAD3-TH8-x Module	17
Module specifications	17
Push button	19
Connection	19
Programming information	20
CPAD3-V8 Module	21
Module specifications	21
Push button	23
Connection	23
Programming information	24
EPAD2/CPAD2-TH8-x Module	25
Module specifications	25
Push button	27
Connection	27
Programming information	28

Table of content

EPAD2/CPAD2-V8 Module	29
Module specifications	29
Push button	31
Connection	31
Programming information	32
EPAD2/CPAD2-V8-L1B Module	33
Module specifications	33
Push button	35
Connection	35
Programming information	35
EPAD2/CPAD2-RTD8-L1B Module	37
Module specifications	37
Push button	39
Connection	39
Programming information	40
EPAD2/CPAD2-TH8-P Module	41
Module specifications	41
General	43
Push button	43
Connection	43
Programming information	44
EPAD2/CPAD2-LA8-L1B Module	45
Module specifications	45
Push button	47
Connection	47
Programming information	47
Signal connection	48
EPAD2-AO4 Module	49
Module specifications	49
Push button	51
Connection	51
Signal connection	53

Table of content

Installing CPAD2/CPAD3 modules	55
Installing CPAD2/CPAD3 modules in DEWESoft 7.x.....	55
Installing EPAD2 modules	58
Installing EPAD2 modules in DEWESoft 7.x (except EPAD2-AO4, EPAD2-USB)	58
Max. cable length & modules per CAN bus	60
Power supply considerations	61
Module reset	62
EPAD2 Module reset:	62
CPAD2/CPAD3 Module reset:	62
Mounting examples	63
Mounting examples	63
Configuration examples	64
Configuration example with EPAD2 modules	64
Configuration example with CPAD2/CPAD3 modules	65
Accessories & Options	66
Accessories	66
CE-Certificate of conformity	C1
CE-Certificate of conformity	C1

Table of content

The information contained in this document is subject to change without notice.

DEWETRON GmbH (DEWETRON) shall not be liable for any errors contained in this document. DEWETRON MAKES NO WARRANTIES OF ANY KIND WITH REGARD TO THIS DOCUMENT, WHETHER EXPRESS OR IMPLIED. DEWETRON SPECIFICALLY DISCLAIMS THE IMPLIED WARRANTIES OF MERCHANTABILITY AND FITNESS FOR A PARTICULAR PURPOSE. DEWETRON shall not be liable for any direct, indirect, special, incidental, or consequential damages, whether based on contract, tort, or any other legal theory, in connection with the furnishing of this document or the use of the information in this document.

Warranty Information

A copy of the specific warranty terms applicable to your DEWETRON product and replacement parts can be obtained from your local sales and service office.

Support

For any support please contact your local distributor first or DEWETRON directly.

For Asia and Europe, please contact:

DEWETRON GmbH
Parking 4
8074 Grambach
AUSTRIA
Tel.: +43 316 3070
Fax: +43 316 307090
Email: support@dewetron.com
Web: <http://www.dewetron.com>

The telephone hotline is available
Monday to Friday between
08:00 and 17:00 CET (GMT +1:00)

For the Americas, please contact:

DEWETRON, Inc.
10 High Street, Suite K
Wakefield, RI 02879
U.S.A.
Tel.: +1 401 284 3750
Toll-free: +1 877 431 5166
Fax: +1 401 284 3755
Email: support@dewamerica.com
Web: <http://www.dewamerica.com>

The telephone hotline is available
Monday to Friday between
08:00 and 17:00 GST (GMT -5:00)

Restricted Rights Legend

Use austrian law for duplication or disclosure.

DEWETRON GmbH
Parking 4
8074 Grambach / Austria

Printing History

Please refer to the page bottom for printing version.

Copyright © DEWETRON GmbH.

This document contains information which is protected by copyright. All rights are reserved. Reproduction, adaptation, or translation without prior written permission is prohibited, except as allowed under the copyright laws.

All trademarks and registered trademarks are acknowledged to be the property of their owners.

Safety instructions

Safety symbols in the manual



Indicates hazardous voltages.

WARNING *Calls attention to a procedure, practice, or condition that could cause bodily injury or death.*

CAUTION *Calls attention to a procedure, practice, or condition that could possibly cause damage to equipment or permanent loss of data.*

WARNINGS

The following general safety precautions must be observed during all phases of operation, service, and repair of this product. Failure to comply with these precautions or with specific warnings elsewhere in this manual violates safety standards of design, manufacture, and intended use of the product. DEWETRON Elektronische Messgeraete Ges.m.b.H. assumes no liability for the customer's failure to comply with these requirements.

All accessories shown in this document are available as option and will not be shipped as standard parts.



*For safety reasons max. 50 V may be applied to the BNC input-connectors!
Refer to the regulation of maximum allowable touch potential.*

Safety instructions for all DEWETRON systems

- The DEWETRON data acquisition systems may only be installed by experts.
- Read your manual before operating the system.
- Observe local laws when using the instrument.
- Ground the equipment: For Safety Class 1 equipment (equipment having a protective earth terminal), a non interruptible safety earth ground must be provided from the mains power source to the product input wiring terminals or supplied power cable.
- DO NOT operate the product in an explosive atmosphere or in the presence of flammable gases or fumes and do not bring the system in contact with water.
- DO NOT operate damaged equipment: Whenever it is possible that the safety protection features built into this product have been impaired, either through physical damage, excessive moisture, or any other reason, REMOVE POWER and do not use the product until safe operation can be verified by service-trained personnel. If necessary, return the product to a DEWETRON sales and service office for service and repair to ensure that safety features are maintained.
- Keep away from live circuits: Operating personnel must not remove equipment covers or shields. Procedures involving the removal of covers or shields are for use by service-trained personnel only. Under certain conditions, dangerous voltages may exist even with the equipment switched off. To avoid dangerous electrical shock, DO NOT perform procedures involving cover or shield removal unless you are qualified to do so.
- No modifications are allowed at the instrument. The fuse in the power module has to be replaced by the same type. For continued protection against fire, replace the line fuse(s) only with fuse(s) of the same voltage and current rating and type. DO NOT use repaired fuses or short-circuited fuse holder labels and print on the power module may not be removed.
- DO NOT service or adjust alone. Do not attempt internal service or adjustment unless another person, capable of rendering first aid and resuscitation, is present.
- DO NOT substitute parts or modify equipment: Because of the danger of introducing additional hazards, do not install substitute parts or perform any unauthorized modification to the product. Return the product to a DEWETRON sales and service office for service and repair to ensure that safety features are maintained.
- Before opening the instrument (experts only) or exchanging the fuse in the power module disconnect power!
- Don't touch internal wiring!
- Don't use higher supply voltage than specified and take care of the correct polarity, otherwise the system will be damaged!
- Use only original plugs and cables for harnessing.
- Safety of the operator and the unit depend on following these rules.
- DEWETRON is not responsible for any damage or injury that could result from improper connection or misuse!

General Information

Environmental Considerations

Information about the environmental impact of the product.

Product End-of-Life Handling

Observe the following guidelines when recycling a DEWETRON system:

System and Components Recycling

Production of these components required the extraction and use of natural resources. The substances contained in the system could be harmful to your health and to the environment if the system is improperly handled at its end of life! Please recycle this product in an appropriate way to avoid an unnecessary pollution of the environment and to keep natural resources.



This symbol indicates that this system complies with the European Union's requirements according to Directive 2002/96/EC on waste electrical and electronic equipment (WEEE). Please find further informations about recycling on the DEWETRON web site www.dewetron.com



Restriction of Hazardous Substances

This product has been classified as Monitoring and Control equipment, and is outside the scope of the 2002/95/EC RoHS Directive. This product is known to contain lead.

General module information

Calibration information

All DEWETRON modules are calibrated at 25 °C and meet their specifications when leaving the factory. The time interval for recalibration depends on environmental conditions. Typically, the calibration should be checked once a year.

Calibration certificates are available from DEWETRON as an option. DEWETRON offers two types:

- ISO traceable DEWETRON certificate
- Calibration certificate according to ÖKD (equivalent to DKD)

This manual contains no calibration information. For self calibration, there is a separate calibration kit available. The CAL-KIT contains the required cables, software and instructions.

General module specifications

Environmental:

Temp. range storage:	-30 °C to +85 °C	(-30 °F to 185 °F)
Temp. range operating:	-5 °C to +60 °C	(-4 °F to 140 °F)
Enhanced temp. range:	on request	
Relative humidity (MIL202):	0 to 95 % at 60 °C, non-condensing	
RFI susceptibility:	±0.5 % span error at 400 MHz, 5 W, 3 m	

All modules are produced according ISO9001 and ISO14001.

Notes

EPAD2-USB Module

EPAD2 interface-module for attaching EPAD2 modules to USB

- Mini USB interface with 1.8 m USB cable
- Virtual COM interface
- RS-485 interface
- LEMO EGG.1B.304 socket for connecting EPAD2 modules



Module specifications

EPAD2-USB	
Inputs	
RS-485 input speed	9600, 19200, 38400, 57600, 115200 Baud
Outputs	
USB	USB 2.0 compatible
General	
Power supply voltage	7 to 40 V _{DC}
Power consumption	max. 3 W
Dimensions	
Base module (W x D x H)	129 x 72 x 34.2 mm (5.1 x 2.8 x 1.3 in.) incl. mounting holes
Mounting holes distance	119 x 7 mm (4.7 x 0.3 in.), 4.2 mm (0.165 in.) diameter
Weight	typically 140 g
Operating temperature	-20 to 60 °C
Storage temperature	-40 to 85 °C
Humidity	95 % RH non condensing @ 60 °C

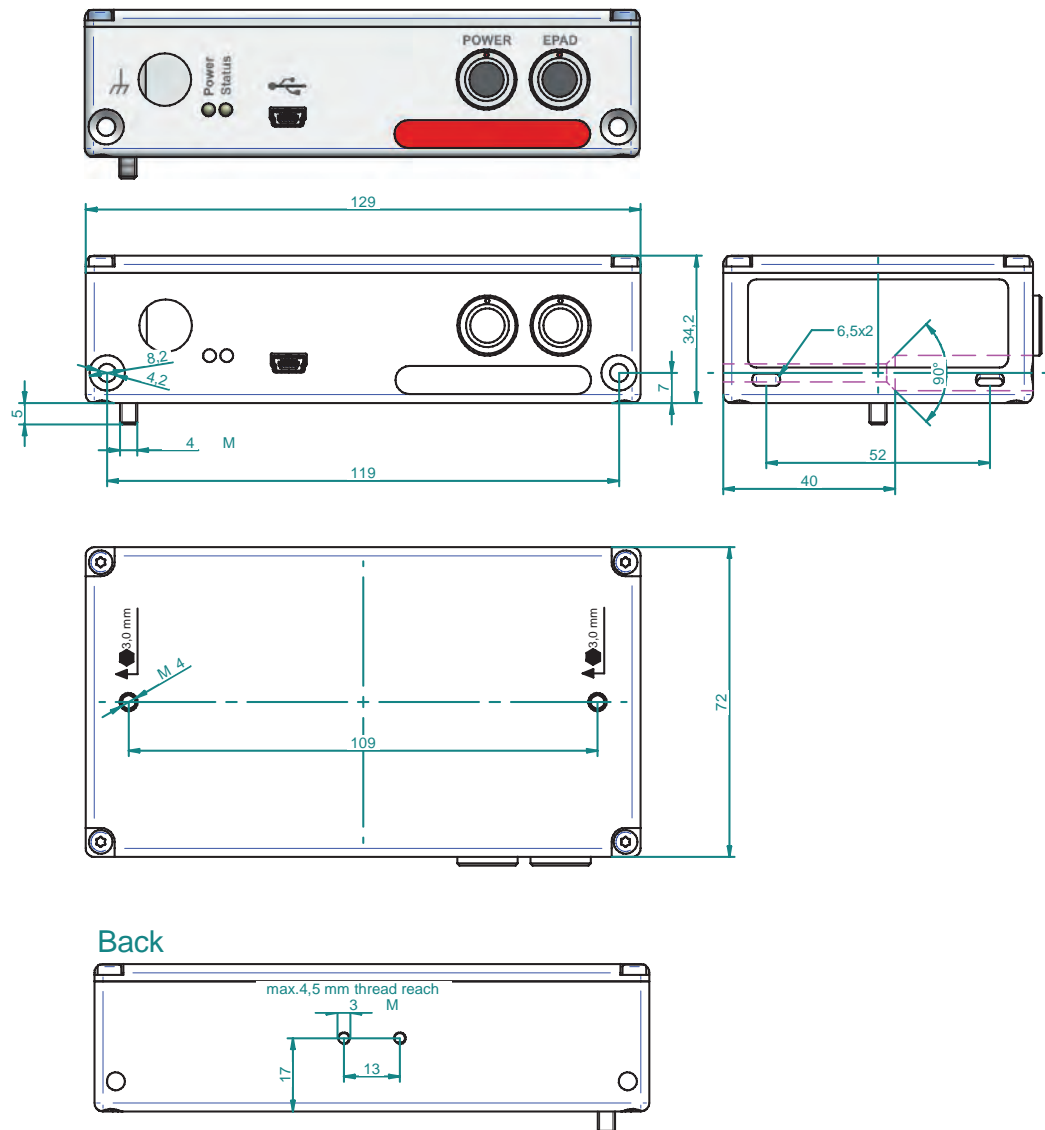
General description

The EPAD2-USB can be used as a standalone device with EPAD2 modules connected to it. The EPAD2-USB is shipped with an external power supply (100 .. 240 V / 15 V_{DC}) to ensure power supply for up to 16 connected EPAD2 modules.

The EPAD2-USB reads the data from connected EPAD2 modules and provides them via native USB interface to the PC/Laptop or any other DEWETRON instrument. The independently working EPAD2-USB module also offers the possibility to create a virtual COM interface in Microsoft Windows® to be used with any software (e.g. DASyLab).

EPAD2-USB Module

Dimensions*



* Dimensions in mm
(1 inch = 25.4 mm)

EPAD2-USB Module

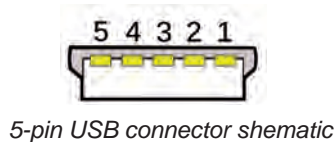
Connection



- 1 Mini USB interface connector
- 2 Power connector
- 3 Power LED
- 4 Status LED
- 5 EPAD interface connector
- 6 Chassis terminal

1 Mini USB-B interface connector

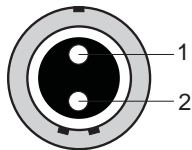
The mini USB-B interface connectors meets standard USB pin assignment.



- Pin assignment
- 1: +5 V
 - 2: D-
 - 3: D+
 - 4: ID
 - 5: GND

2 POWER connector

This connector is used for power supply connected EPAD2 modules.



- Pin assignment
- 1: +7 .. 40 V_{DC}
 - 2: GND

2-pin LEMO EGJ.1B.302

3 Status LED

This LED indicates data transmissions.

4 Power LED

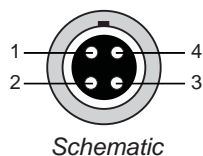
This LED indicates power supply state. The EPAD2-USB is powered via USB but **NOT** with the external power supply! The Power LED is only active when connected to a USB port of your PC/Laptop and **NOT** when connected to the external power supply!

5 EPAD interface connector

This connector can be used to connect the EPAD2-USB to other EPAD2 series modules



4 pin LEMO series connector



Schematic

Pin assignment EPAD2:

- 1 RS-485 (A)
- 2 RS-485 (B)
- 3 Power supply (+)
- 4 GND

6 Chassis terminal

For some kind of measurements, it's necessary to provide the module with an additional ground connection

EPAD2-USB Module

Installing USB drivers

Before connecting the EPAD2-USB device to your PC/Laptop make sure to install the USB drivers for your instrument. To install the corresponding drivers insert the **DEWETRON Install Media USB drive** shipped with your system and click <start.exe>. Navigate to "**Drivers**" > "**USB & RS485**" > "**dewetron_usb**". Execute the <setup.exe> and follow the steps of the installation wizard.

How to setup EPAD2-USB in DASyLab

The EPAD2-USB creates a virtual COM interface in Microsoft® Windows® device manager and can be used in DASyLab. For this, connect your DEWE2-USB to the PC/Laptop via USB interface after installing the USB drivers and start DASyLab.

In DASyLab navigate to "**DEWETRON module**" and click "**Serial Port Configuration**".

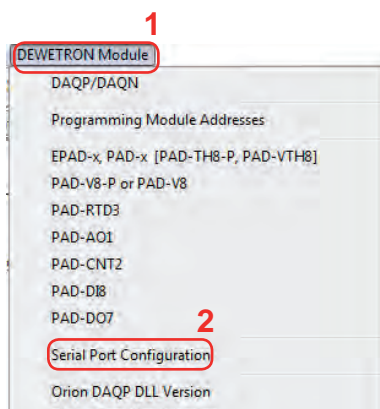


Figure 1: Select "DEWETRON Module" > "Serial Port Configuration"

DASyLab automatically recognizes the used COM port of the driver. Click "**Add**" to add the desired COM port.

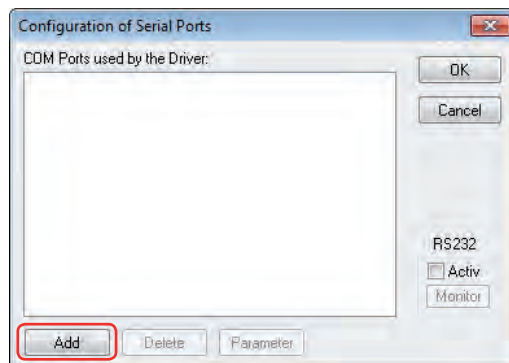


Figure 2: Adding a COM port

Select the desired COM port parameters and proceed with "**OK**".

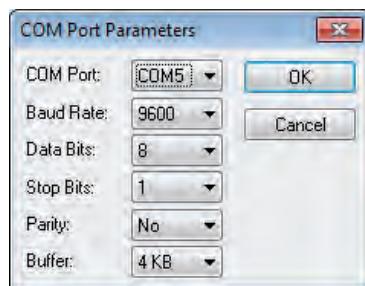


Figure 3: Selecting COM port parameters

EPAD2-USB Module

Proceed with "OK".

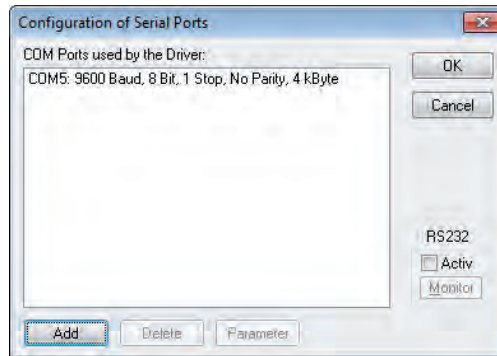


Figure 4: Summary of added COM ports used by the driver

Now you have successfully setup your EPAD2-USB in DASyLab.

How to setup EPAD2-USB in DEWESoft™

First of all, a valid DEWESoft™ license is required to run EPAD modules in DEWESoft™ such as DS-7-LT or higher.

Connect the DEWE2-USB to the PC/Laptop via USB interface after installing the USB drivers and start DEWESoft™. Due to the fact that DEWESoft™ lists all available COM ports it is necessary to determine the correct COM port in the Microsoft® Windows® device manager.

For this, click on "**Start**" > "**Control panel**" and navigate to "**Device manager**". In the device manager select "**Connectors (COM & LPT)**" and note which COM port is used by the driver for the EPAD2-USB.

In DEWESoft™ select "**Settings**" > "**Hardware setup**".

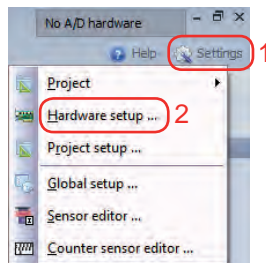


Figure 1: "Settings" > "Hardware Setup"

For the EPAD2-USB select "**COM port or offline**" from the amplifiers dropdown menu. Afterwards select the "**COM port**" corresponding to the used one in the Microsoft® Windows® device manager.

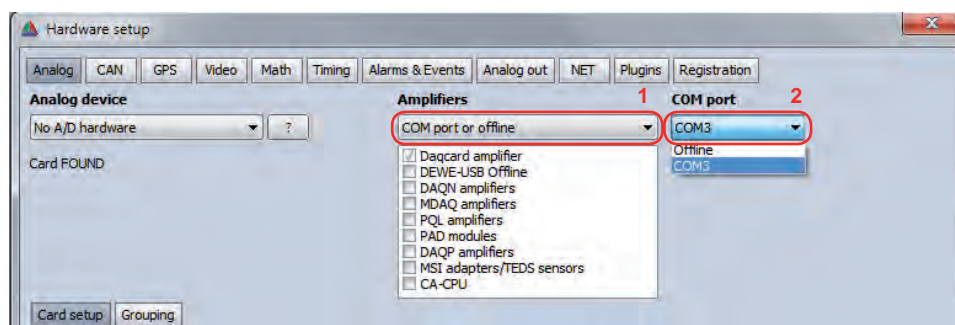


Figure 2: "COM port or offline" > "COM port"

EPAD2-USB Module

Notes

CPAD3-TH8-x Module

8 channel thermocouple amplifier

- Intelligent amplifier with integrated A/D conversion
- 8 input channels for thermocouples
- Available thermocouple types:
xPAD2-TH8-x: K, J, T standard type
xPAD2-TH8-UNIVERSAL: Universal type
- Standard CAN interface

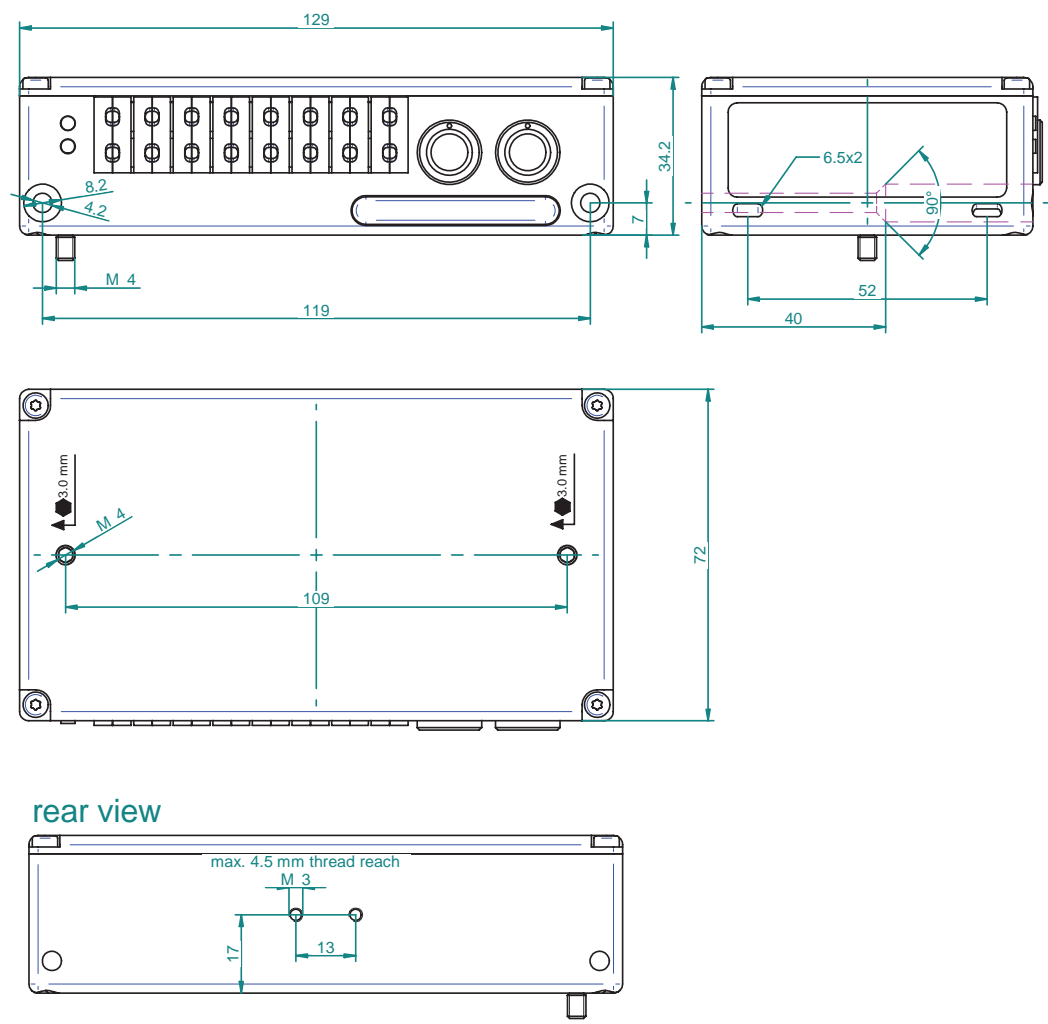


Module specifications

CPAD3-TH8-x	
Input channels	8 isolated Thermocouple Channels
Input signals	Thermocouple type K, J, T (others on request)
CPAD3-TH8-x	Thermocouple type K, J, T, R, S, N, E, C, U, B
CPAD3-TH8-UNIVERSAL	
Sampling rate	max. 100 S/sec per channel
Bandwidth (-3 dB)	48 Hz
ADC type	20 Bit Delta Sigma Converter
Input connector	mini Thermocouple connector
Resolution	0.01 °C for all types
Input impedance	>1 MΩ
Bias current	<1 nA
Open thermocouple detection	module indicates fullscale if input is open
Accuracy*	
Standard models CPAD3-TH8-K /-J / -T	
Type K (-270 to 1372 °C):	±1.0 °C @ -200 to -25 °C ±0.4 °C @ -25 to 1000 °C ±0.5 °C @ 1000 to 1372 °C
Type J (-210 to 1200 °C):	±1.0 °C @ -210 to -100 °C ±0.3 °C @ -100 to 760 °C ±0.4 °C @ 760 to 1200 °C
Type T (-270 to 400 °C):	±1.0 °C @ -250 to -150 °C ±0.4 °C @ -150 to 400 °C
Special models on request CPAD3-TH8-x	
Type R, S (-50 to 1760 °C):	±1.6 °C @ -50 to 0 °C ±1.0 °C @ 0 to 100 °C ±0.4 °C @ 100 to 1760 °C
Type N (-270 to 1300 °C):	±1.2 °C @ -200 to -100 °C ±0.5 °C @ -100 to 1300 °C
Type E (-270 to 1000 °C):	±1.0 °C @ -200 to -50 °C ±0.4 °C @ -50 to 1000 °C
Type C (0 to 2300 °C):	±0.6 °C @ 0 to 800 °C ±0.8 °C @ -800 to 1500 °C ±1.5 °C @ 1500 to 2300 °C
Type U (-200 to 600 °C):	±1.0 °C @ -200 to -50 °C ±0.4 °C @ -50 to 200 °C ±0.3 °C @ 200 to 600 °C
Type B (0 to 1820 °C):	±20 °C @ 0 to 400 °C ±0.6 °C @ 400 to 1000 °C ±0.5 °C @ 1000 to 1800 °C
* ±1.0 °C when using CPAD3-TH8-UNIVERSAL	
Max. gain drift	25 ppm /°C
Max. offset drift	25 ppm of range /°C
Isolation voltage	1500 V _{DC} (channel to channel and channel to Bus, Power and Chassis)
Overvoltage protection	50 V _{DC}
CMRR (50/60 Hz) @ 0.01 to 10 S/sec	>110 dB
CPAD3-TH8	
Interface	highspeed CAN
Specification	CAN 2.0B
Communication speed	50 kBaud to 1000 kBaud
Data Format	16 Bit Intel or Motorola
Identifier Types	standard; extended
Standard settings	500 kBaud; Intel Format
Readout speed	100 Hz, 50 Hz, 20 Hz, 10 Hz, 5 Hz, 2 Hz, 1 Hz, 0.5 Hz, 0.2 Hz or 0.1 Hz, 0.05 Hz, 0.02 Hz, 0.01 Hz, programmable
Bus/Power Connector	LEMO EGG.1B.304
Power Supply Voltage	7 to 40V
Power consumption	1 W
Dimensions	
Base module (W x D x H)	129 x 72 x 34.2 mm (5.1 x 2.8 x 1.3 in.) incl. mounting holes
Mounting holes distance:	119 x 7 mm (4.7 x 0.3 in.), 4.2 mm (0.165 in.) diameter
Weight	typically 405 g (~0.9 lbs)

CPAD3-TH8-x Module

Dimensions*



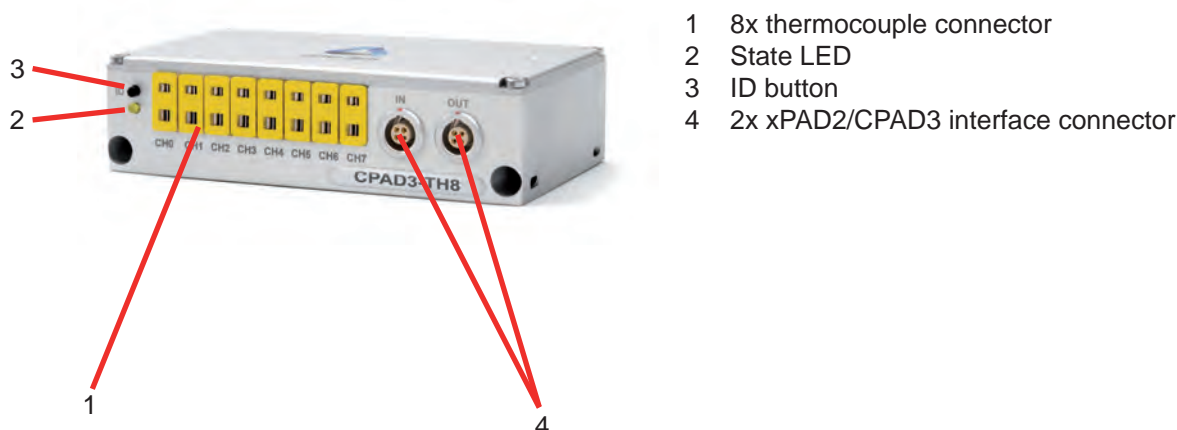
* Dimensions in mm
(1 inch = 25.4 mm)

CPAD3-TH8-x Module

Push button

Use the ID button to define the module address via software. Detailed information how to use the button is available in chapter: "Module reset".

Connection



Thermocouple connectors

The CPAD3-TH8-x module supports up to 8 thermocouples. Connect only thermocouple types which match with the connector types. If the module is equipped with type K connectors, you are allowed to connect type K thermocouples only. The white universal connector supports all types of thermocouple connectors.

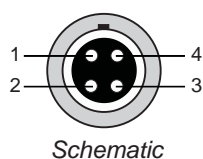


Thermocouple types						
Type	IEC color code	ANSI color code	Temperature range °C [°F]	Alloy combination		Comments
K	green	yellow	-270 to 1372 [-454 to 2501]	Ni	CrNi	Wide temperature range, most popular calibration
J	black	black	-210 to 1200 [-346 to 2193]	Fe	CuNi	Used in vacuum, reduced and inert atmosphere
T	brown	blue	-270 to 400 [-454 to 752]	Cu	CuNi	Low temperature & cryogenic applications
R	orange	green	-50 to 1760 [-58 to 3214]	Pt13Rh	Pt	High temperature
S	orange	green	-50 to 1760 [-58 to 3214]	Pt10Rh	Pt	High temperature
U	orange	green	-200 to 600 [-328 to 1112]	Cu	CuNi	Also known as RX & SX extension wire.
N	rose	orange	-270 to 1300 [-450 to 2372]	NiCrSi	NiSi	Alternative to type K. More stable at high temp.
E	purple	purple	-270 to 1000 [-454 to 1832]	NiCr	CuNi	Highest EMF change per degree
B	grey	grey	0 to 1820 [32 to 3308]	Pt30Rh	Pt6Rh	High temperature. Common use in glass industry
C*	no standard IEC color	red*	0 to 2300 [32 to 4172]	W5Re	W26Re	Highest temperature range

*) no official symbol or standard designation

xPAD2/CPAD3 interface connector

This connector can be used to connect the module to other xPAD2/CPAD3 series modules.



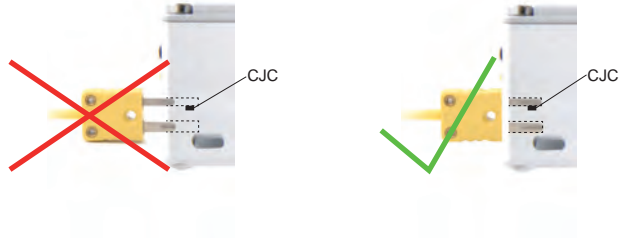
Pin assignment CPAD3:

- 1 CAN high
- 2 CAN low
- 3 Power supply (+)
- 4 GND

CPAD3-TH8-x Module

CJC

The CPAD3-TH8-x comes with an integrated cold junction compensation sensor with an absolute accuracy of ± 0.2 °C. In order to achieve this accuracy the sensor has to be connected for at least 2 minutes to the thermocouple connector (CJC equilibrium time).



NOTE: With the CPAD3-TH8-UNIVERSAL it is possible to get almost the same accuracy under laboratory conditions compared to the CPAD3 with dedicated TC-connectors. If the environmental temperature is rapidly changing, the accuracy may decrease three times more compared to the standard thermocouple types! So the CPAD3-TH8-UNIVERSAL is not recommended for automotive measurements!

Programming information

The CPAD3-TH8-x programming information is available in the *DEWE-MODULES Programmers Reference Manual*.

CPAD3-V8 Module

8 channel voltage amplifier

- Intelligent amplifier with integrated 20-bit A/D conversion
- 8 channel isolated data acquisition
- Standard CAN interface

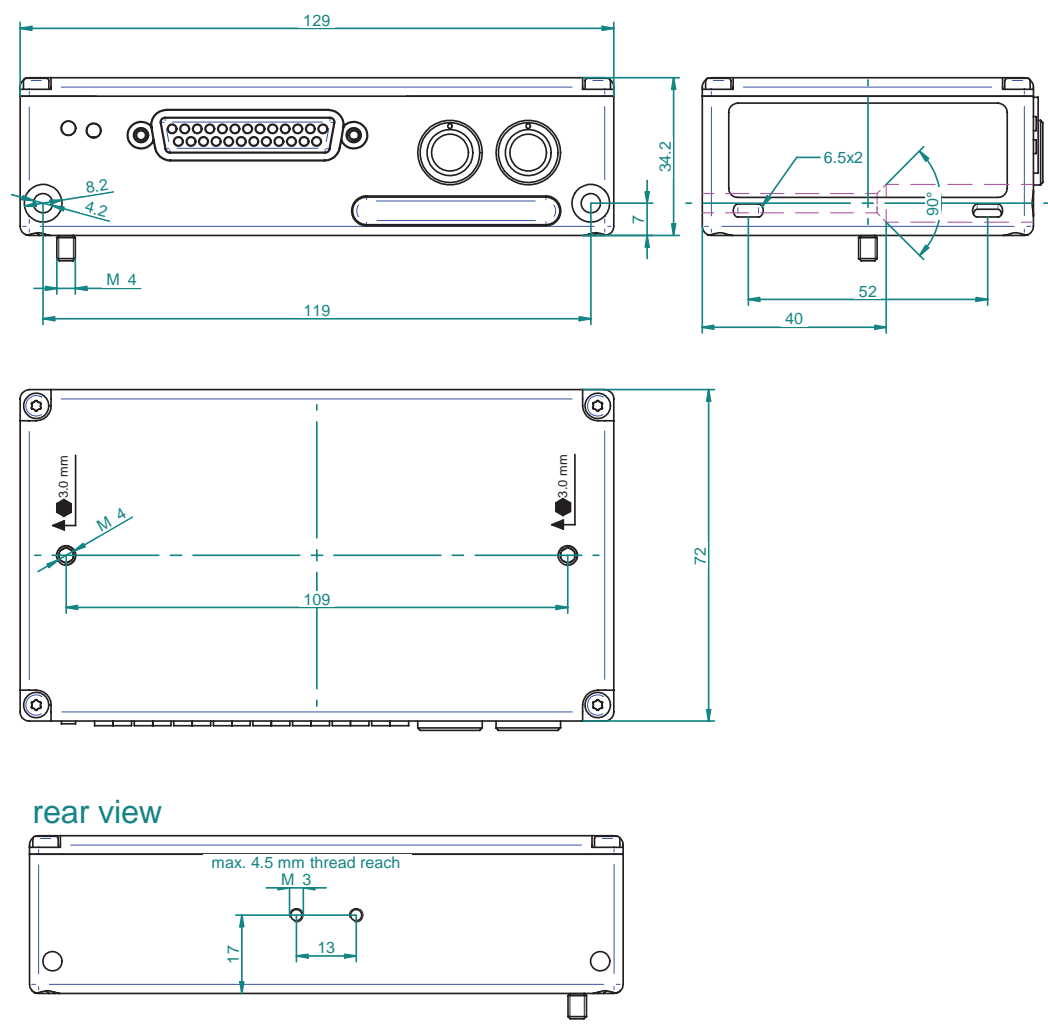


Module specifications

CPAD3-V8	
Input channels	8 isolated voltage input channels
Input ranges	Physical input range: ± 50 V Software selectable: ± 100 mV, ± 500 mV, ± 1 V, ± 2.5 V, ± 5 V, ± 10 V
Resolution	100 μ V for all ranges
DC accuracy	± 0.02 % of reading ± 900 μ V
Max. gain drift	20 ppm/ $^{\circ}$ C
Max. offset drift	20 ppm of range / $^{\circ}$ C
Linearity	0.002 %
Input impedance	0.97 M Ω
Input connector	SUB-D 25
Sampling rate	max. 100 S/sec per channel
Bandwidth (-3 dB)	48 Hz
ADC Type	20 bit Delta Sigma Converter
Isolation voltage	1500 V _{DC} (channel to channel and channel to Bus, Power and Chassis)
Overvoltage protection	350 V _{DC}
CMRR (50/60 Hz) @ 0.01 to 10 S/sec	110 dB (130 dB @ DC)
CPAD3-V8	
Interface	highspeed CAN
Specification	CAN 2.0B
Communication speed	50 kBaud to 1000 kBaud
Data format	16 Bit Intel or Motorola
Identifier types	standard; extended
Standard settings	500 kBaud; Intel Format
Readout speed	100 Hz, 50 Hz, 20 Hz, 10 Hz, 5 Hz, 2 Hz, 1 Hz, 0.5 Hz, 0.2 Hz or 0.1 Hz, 0.05 Hz, 0.02 Hz, 0.01 Hz, programmable
Bus/Power connector	LEMO EGG.1B.304
Power supply voltage	7 to 40V
Power consumption	1 W
Dimensions	
Base module (W x D x H)	129 x 72 x 34.2 mm (5.1 x 2.8 x 1.3 in.) incl. mounting holes
Mounting holes distance	119 x 7 mm (4.7 x 0.3 in.), 4.2 mm (0.165 in.) diameter
Weight	typically 310 g (~0.7 lbs)

CPAD3-V8 Module

Dimensions*



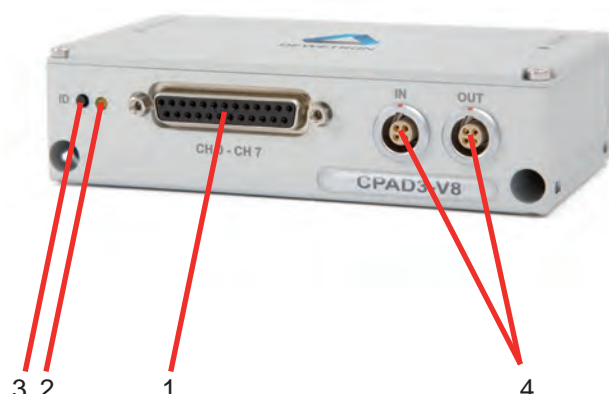
* Dimensions in mm
(1 inch = 25.4 mm)

CPAD3-V8 Module

Push button

Use the ID button to define the module address via software. Detailed information how to use the button is available in chapter: "Module reset".

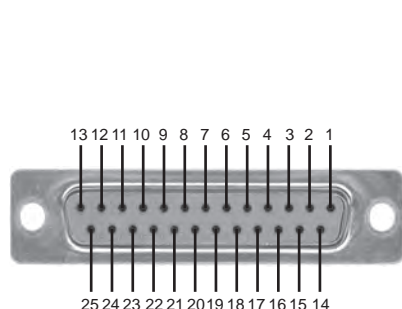
Connection



- 1 Voltage input connector
- 2 State LED
- 3 ID button
- 4 2x xPAD2/CPAD3 interface connector

Voltage input connector

The CPAD3-V8 module offers 8 differential voltage input channels.



25-pin female DSUB connector

Pin assignment:

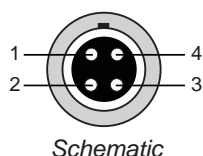
1	Channel 0	(+)	13	Channel 6	(+)
2	Channel 0	(-)	14	Channel 6	(-)
3	Channel 1	(+)	15	Channel 7	(+)
4	Channel 1	(-)	16	Channel 7	(-)
5	Channel 2	(+)	17	Reserved	
6	Channel 2	(-)	18	Reserved	
7	Channel 3	(+)	19	Reserved	
8	Channel 3	(-)	20	Power supply (+)	
9	Channel 4	(+)	21	Reserved	
10	Channel 4	(-)	22	GND	
11	Channel 5	(+)	23	Reserved	
12	Channel 5	(-)	24	Reserved	
			25	Reserved	

xPAD2/CPAD3 interface connector

This connector can be used to connect the module to other xPAD2/CPAD3 series modules.



4 pin LEMO series connector



Schematic

Pin assignment CPAD3:

- 1 CAN high
- 2 CAN low
- 3 Power supply (+)
- 4 GND

CPAD3-V8 Module

Programming information

The CPAD3-V8 programming information is available in the *DEWE-MODULES Programmers Reference Manual*.

EPAD2/CPAD2-TH8-x Module

8 channel thermocouple amplifier

- Intelligent amplifier with integrated A/D conversion
- 8 input channels for thermocouples
- Available thermocouple types:
xPAD2-TH8-x: K, J, T standard type
xPAD2-TH8-UNIVERSAL: Universal type
- RS-485 or CAN interface

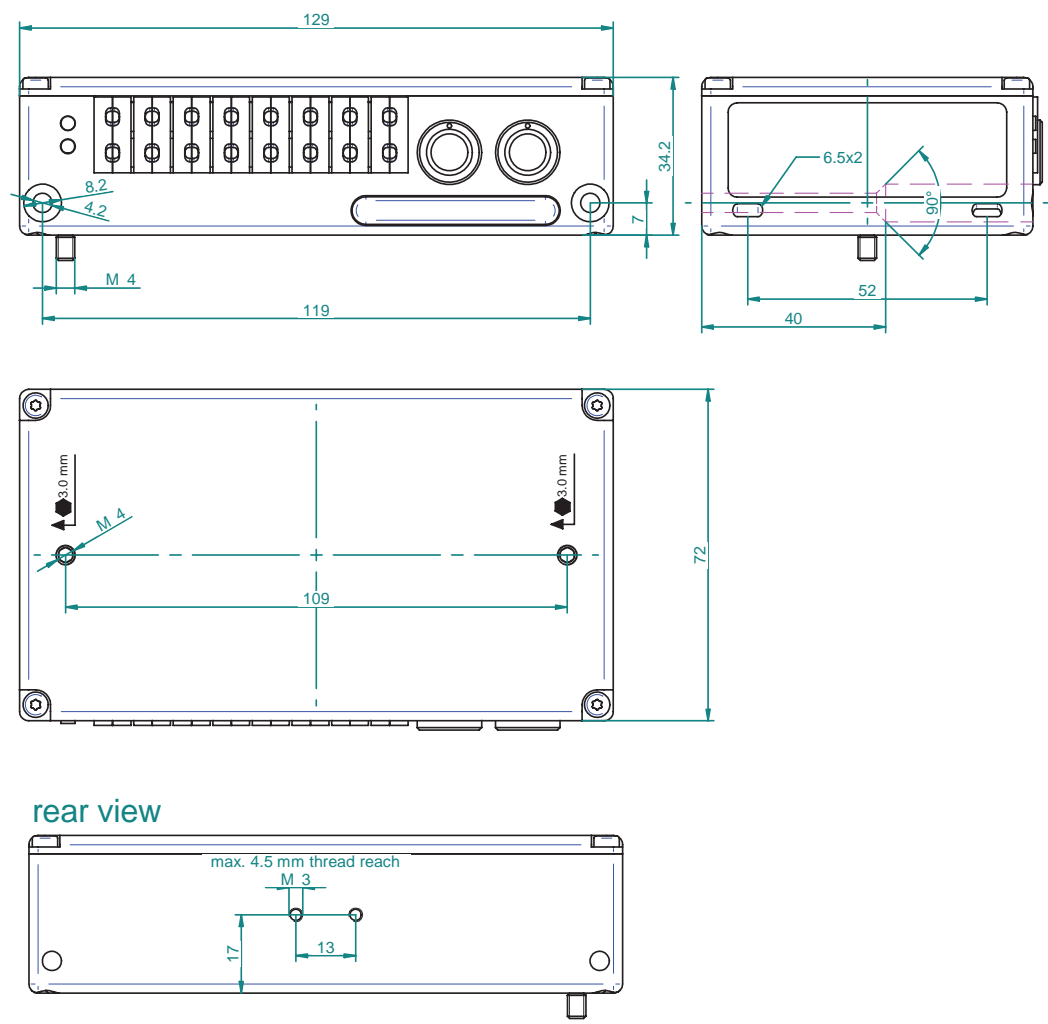


Module specifications

xPAD2-TH8-x	
Input channels	8 isolated Thermocouple Channels
Input signals	Thermocouple type K, J, T (others on request)
xPAD2-TH8-x	Thermocouple type K, J, T, R, S, N, E, C, U, B
xPAD2-TH8-UNIVERSAL	
Sampling rate	max. 12.5 S/sec per channel
Bandwidth (-3 dB)	6 Hz
ADC type	24 Bit Delta Sigma Converter
Input connector	mini Thermocouple connector
Resolution	0.01 °C for all types
Input impedance	typically 1.4 MΩ
Bias current	typically 10 nA
Open thermocouple detection	module indicates fullscale if input is open
Accuracy* (including CJC error)	
Type K (-270 to 1372 °C):	-270 to -200 °C -200 to 100 °C -100 to 0 °C 0 to 100 °C 100 to 400 °C 400 to 1000 °C > 1000 °C
Type J (-210 to 1200 °C):	10.0 °C** 1.0 °C 0.5 °C 0.4 °C 0.5 °C 0.7 °C 1.0 °C
Type T (-270 to 400 °C):	0.9 °C** 1.0 °C 0.4 °C 0.3 °C 0.4 °C 0.6 °C 1.0 °C
Type R (-50 to 1760 °C):	6.5 °C** 1.0 °C 0.5 °C 0.4 °C 0.4 °C - -
Type S (-50 to 1760 °C):	- - 2.6 °C 1.8 °C 1.3 °C 1.1 °C 1.3 °C
Type N (-270 to 1300 °C):	- - 2.4 °C 1.8 °C 1.4 °C 1.1 °C 1.5 °C
Type E (-270 to 1000 °C):	16.0 °C** 1.3 °C 0.6 °C 0.5 °C 0.5 °C 0.6 °C 0.8 °C
Type L (0 to 900 °C):	5.5 °C** 0.8 °C 0.4 °C 0.3 °C 0.3 °C 0.5 °C -
Type C (0 to 2300 °C):	- - - 0.4 °C 0.4 °C 0.5 °C -
Type U (-200 to 600 °C):	- - - 0.8 °C 0.7 °C 1.0 °C 1.4 °C
Type B (0 to 1820 °C):	- 1.0 °C 0.6 °C 0.4 °C 0.4 °C 0.4 °C -
	- - - 90.2 °C** 9.0 °C 2.3 °C 1.2 °C
* +1.0 °C when using xPAD2-TH8-UNIVERSAL. **) calculated specification; not verified.	
Max. gain drift	25 ppm/°C
Max. offset drift	25 ppm of range /°C
Isolation voltage	350 V _{DC} (channel to channel and channel to Bus, Power and Chassis)
Overvoltage protection	15 V _{DC}
CMRR (50/60 Hz)	130 dB
EPAD2-TH8	
Interface	RS-485
Communication speed	9600 bps (2400 to 115200 programmable)
Standard settings	9600 bps, 8 data bits, 1 stop bit, no parity, module address 00 hex
Readout speed	depending on baudrate and number of channels (typ. 80 ch/sec. @ 9600bps)
CPAD2-TH8	
Interface	highspeed CAN
Specification	CAN 2.0B
Communication speed	50 kBaud to 1000 kBaud
Data Format	16 Bit Intel or Motorola
Identifier Types	standard; extended
Standard settings	500 kBaud; Intel Format
Readout speed	12.5Hz, 10Hz, 5Hz, 2Hz, 1Hz, 0.5Hz, 0.2Hz or 0.1Hz programmable
Bus/Power Connector	LEMO EGG.1B.304
Power Supply Voltage	7 to 40V
Power consumption	max 0.5 W
Dimensions	
Base module (W x D x H)	129 x 72 x 34.2 mm (5.1 x 2.8 x 1.3 in.) incl. mounting holes
Mounting holes distance:	119 x 7 mm (4.7 x 0.3 in.), 4.2 mm (0.165 in.) diameter
Weight	typically 360 g

EPAD2/CPAD2-TH8-x Module

Dimensions*



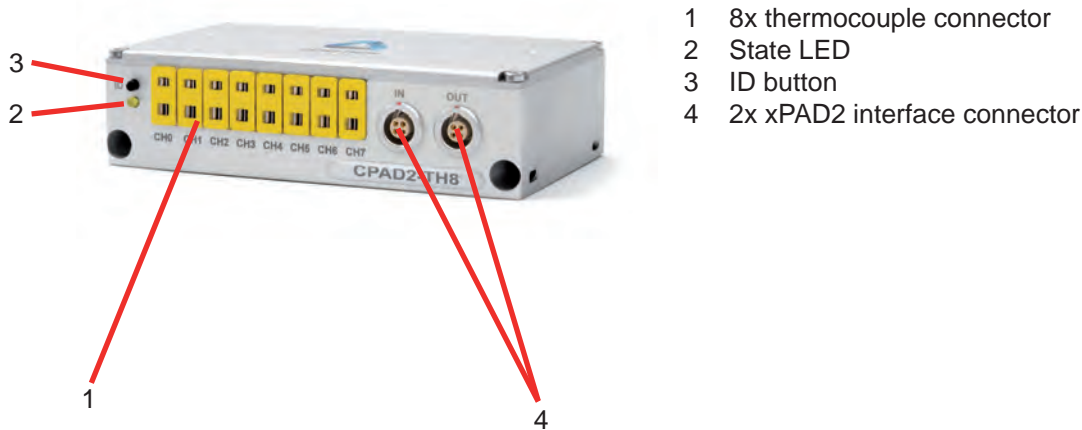
* Dimensions in mm
(1 inch = 25.4 mm)

EPAD2/CPAD2-TH8-x Module

Push button

Use the ID button to define the module address via software. Detailed information how to use the button is available in chapter: "Installing EPAD2/CPAD2 modules in DEWESoft, Module reset".

Connection



Thermocouple connectors

The xPAD2-TH8-x module supports up to 8 thermocouples. Connect only thermocouple types which match with the connector types. If the module is equipped with type K connectors, you are allowed to connect type K thermocouples only. The white universal connector supports all types of thermocouple connectors.

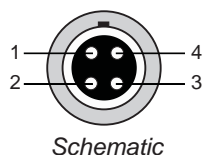


Thermocouple types						
Type	IEC color code	ANSI color code	Temperature range °C [°F]	Alloy combination		Comments
K	green	yellow	-270 to 1372 [-454 to 2501]	Ni	CrNi	Wide temperature range, most popular calibration
J	black	black	-210 to 1200 [-346 to 2193]	Fe	CuNi	Used in vacuum, reduced and inert atmosphere
T	brown	blue	-270 to 400 [-454 to 752]	Cu	CuNi	Low temperature & cryogenic applications
R	orange	green	-50 to 1760 [-58 to 3214]	Pt13Rh	Pt	High temperature
S	orange	green	-50 to 1760 [-58 to 3214]	Pt10Rh	Pt	High temperature
U	orange	green	-200 to 600 [-328 to 1112]	Cu	CuNi	Also known as RX & SX extension wire.
N	rose	orange	-270 to 1300 [-454 to 2372]	NiCrSi	NiSi	Alternative to type K. More stable at high temp.
E	purple	purple	-270 to 1000 [-454 to 1832]	NiCr	CuNi	Highest EMF change per degree
B	grey	grey	0 to 1820 [32 to 3308]	Pt30Rh	Pt6Rh	High temperature. Common use in glass industry
C*	no standard IEC color	red*	0 to 2300 [32 to 4172]	W5Re	W26Re	Highest temperature range

*) no official symbol or standard designation

xPAD2 interface connector

This connector can be used to connect the module to the EPAD2-BASE module or other xPAD2 series modules.



Pin assignment EPAD2:

- 1 RS-485 (A)
- 2 RS-485 (B)
- 3 Power supply (+)
- 4 GND

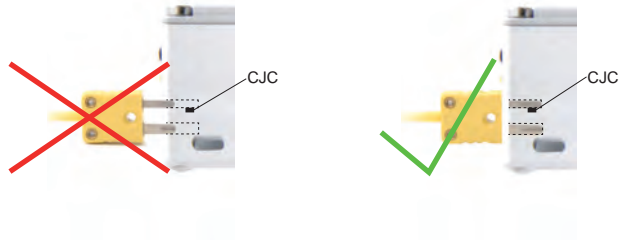
Pin assignment CPAD2:

- 1 CAN high
- 2 CAN low
- 3 Power supply (+)
- 4 GND

EPAD2/CPAD2-TH8-x Module

CJC

The xPAD2-TH8-x comes with an integrated cold junction compensation sensor with an absolute accuracy of ± 0.2 °C. In order to achieve this accuracy the sensor has to be connected for at least 2 minutes to the thermocouple connector (CJC equilibrium time).



NOTE: With the xPAD2-TH8-UNIVERSAL it is possible to get almost the same accuracy under laboratory conditions compared to the xPAD2 with dedicated TC-connectors. If the environmental temperature is rapidly changing, the accuracy may decrease three times more compared to the standard thermocouple types! So the XPAD2-TH8-UNIVERSAL is not recommended for automotive measurements!

Programming information

The xPAD2-TH8-x programming information is available in the *DEWE-MODULES Programmers Reference Manual*.

EPAD2/CPAD2-V8 Module

8 channel voltage amplifier

- Intelligent amplifier with integrated 24-bit A/D conversion
- 8 channel isolated data acquisition
- RS-485 or CAN interface

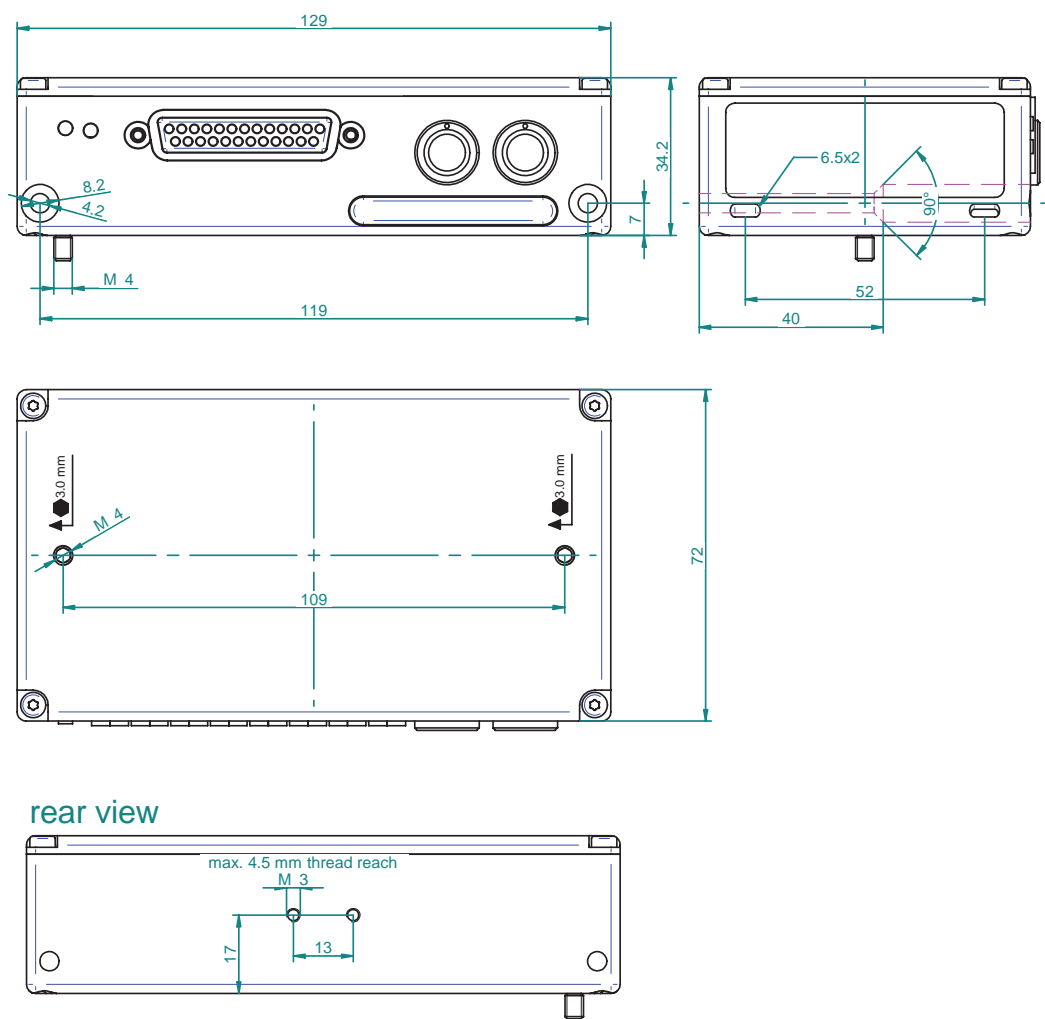


Module specifications

xPAD2-V8	
Input channels	8 isolated voltage input channels
Input ranges	Physical input range: ± 50 V Software selectable: ± 100 mV, ± 500 mV, ± 1 V, ± 2.5 V, ± 5 V, ± 10 V
Resolution	10 μ V for all ranges
DC accuracy	± 0.02 % of reading ± 900 μ V
Max. gain drift	20 ppm / $^{\circ}$ C
Max. offset drift	20 ppm of range / $^{\circ}$ C
Linearity	0.001 %
Input impedance	1 M Ω
Input connector	SUB-D 25
Sampling rate	max. 12.5 S/sec per channel
Bandwidth (-3 dB)	6 Hz
ADC Type	24 bit Delta Sigma Converter
Isolation voltage	350 V _{DC} (channel to channel and channel to Bus, Power and Chassis)
Overvoltage protection	350 V _{DC}
Common mode voltage	350 V _{DC} / 250 V _{AC} @ 50 Hz
CMRR (50/60 Hz)	110 dB (140 dB @ DC)
EPAD2-V8	
Interface	RS-485
Communication speed	9600 bps (2400 to 115200 programmable)
Standard settings	9600 bps, 8 data bits, 1 stop bit, no parity, module address 00 hex
Readout speed	depending on baudrate and number of channels (typ. 80 ch/sec. @ 9600 bps)
CPAD2-V8	
Interface	highspeed CAN
Specification	CAN 2.0B
Communication speed	50 kBaud to 1000 kBaud
Data format	16 Bit Intel or Motorola
Identifier types	standard; extended
Standard settings	500 kBaud; Intel Format
Readout speed	12.5 Hz, 10 Hz, 5 Hz, 2 Hz, 1 Hz, 0.5 Hz, 0.2 Hz or 0.1 Hz programmable
Bus/Power connector	LEMO EGG.1B.304
Power supply voltage	7 to 40V
Power consumption	max. 0.5 W
Dimensions	
Base module (W x D x H)	129 x 72 x 34.2 mm (5.1 x 2.8 x 1.3 in.) incl. mounting holes
Mounting holes distance	119 x 7 mm (4.7 x 0.3 in.), 4.2 mm (0.165 in.) diameter
Weight	typically 310 g

EPAD2/CPAD2-V8 Module

Dimensions*



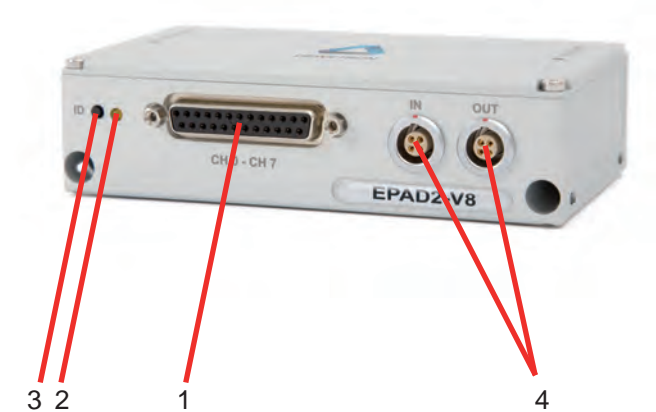
* Dimensions in mm
(1 inch = 25.4 mm)

EPAD2/CPAD2-V8 Module

Push button

Use the ID button to define the module address via software. Detailed information how to use the button is available in chapter: "Installing EPAD2/CPAD2 modules in DEWESoft, Module reset".

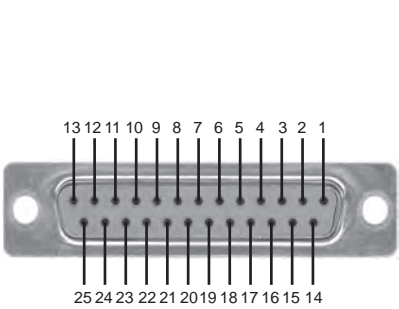
Connection



- 1 Voltage input connector
- 2 State LED
- 3 ID button
- 4 2x xPAD2 interface connector

Voltage input connector

The xPAD2-V8 module offers 8 differential voltage input channels.



25-pin female DSUB connector

Pin assignment:

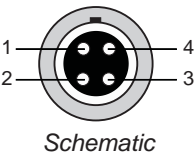
1	Channel 0	(+)	13	Channel 6	(+)
2	Channel 0	(-)	14	Channel 6	(-)
3	Channel 1	(+)	15	Channel 7	(+)
4	Channel 1	(-)	16	Channel 7	(-)
5	Channel 2	(+)	17	Reserved	
6	Channel 2	(-)	18	Reserved	
7	Channel 3	(+)	19	Reserved	
8	Channel 3	(-)	20	Power supply (+)	
9	Channel 4	(+)	21	Reserved	
10	Channel 4	(-)	22	GND	
11	Channel 5	(+)	23	Reserved	
12	Channel 5	(-)	24	Reserved	
			25	Reserved	

xPAD2 interface connector

This connector can be used to connect the module to the EPAD-BASE2 module or other xPAD2 series



4 pin LEMO series connector



Schematic

Pin assignment EPAD2:

- 1 RS-485 (A)
- 2 RS-485 (B)
- 3 Power supply (+)
- 4 GND

Pin assignment CPAD2:

- 1 CAN high
- 2 CAN low
- 3 Power supply (+)
- 4 GND

EPAD2/CPAD2-V8 Module

Programming information

The xPAD-V8 programming information is available in the *DEWE-MODULES Programmers Reference Manual*.

EPAD2/CPAD2-V8-L1B Module

8 channel voltage amplifier

- Intelligent amplifier with integrated 24-bit A/D conversion
- 8 channel isolated data acquisition
- RS-485 or CAN interface

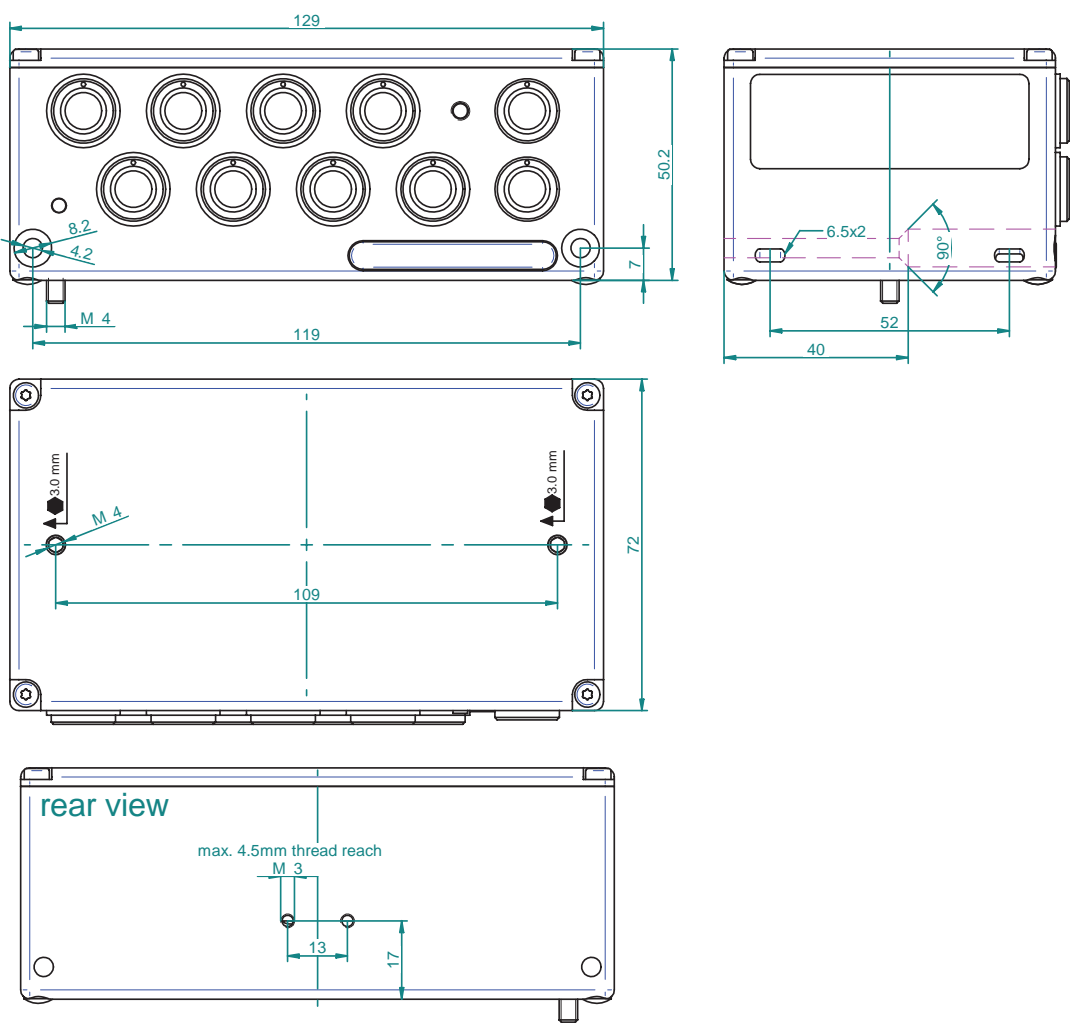


Module specifications

xPAD2-V8-L1B	
Input channels	8 isolated voltage input channels
Input ranges	Physical input range: ± 50 V Software selectable: ± 100 mV, ± 500 mV, ± 1 V, ± 2.5 V, ± 5 V, ± 10 V
Resolution	10 μ V for all ranges
DC accuracy	± 0.02 % of reading ± 900 μ V
Max. gain drift	20 ppm / $^{\circ}$ C
Max. offset drift	20 ppm of range / $^{\circ}$ C
Linearity	0.001 %
Input impedance	1 M Ω
Input connector	LEMO ECA.1B.304
Sampling rate	max. 12.5 S/sec per channel
Bandwidth (-3 dB)	6 Hz
ADC Type	24 bit Delta Sigma Converter
Isolation voltage	350 V _{DC} (channel to channel and channel to Bus, Power and Chassis)
Overvoltage protection	350 V _{DC}
Common mode voltage	350 V _{DC} / 250 V _{AC} @ 50 Hz
CMRR (50/60 Hz)	110 dB (140 dB @ DC)
EPAD2-V8-L1B	
Interface	RS-485
Communication speed	9600 bps (2400 to 115200 programmable)
Standard settings	9600 bps, 8 data bits, 1 stop bit, no parity, module address 00 hex
Readout speed	depending on baudrate and number of channels (typ. 80 ch/sec. @ 9600 bps)
CPAD2-V8-L1B	
Interface	highspeed CAN
Specification	CAN 2.0B
Communication speed	50 kBaud to 1000 kBaud
Data format	16 Bit Intel or Motorola
Identifier types	standard; extended
Standard settings	500 kBaud; Intel Format
Readout speed	12.5 Hz, 10 Hz, 5 Hz, 2 Hz, 1 Hz, 0.5 Hz, 0.2 Hz or 0.1 Hz programmable
Bus/Power connector	LEMO EGG.1B.304
Power supply voltage	7 to 40 V
Power consumption	max. 0.5 W
Dimensions	
Base module (W x D x H)	129 x 72 x 34.2 mm (5.1 x 2.8 x 1.3 in.) incl. mounting holes
Mounting holes distance	119 x 7 mm (4.7 x 0.3 in.), 4.2 mm (0.165 in.) diameter
Weight	typically 310 g

EPAD2/CPAD2-V8-L1B Module

Dimensions*



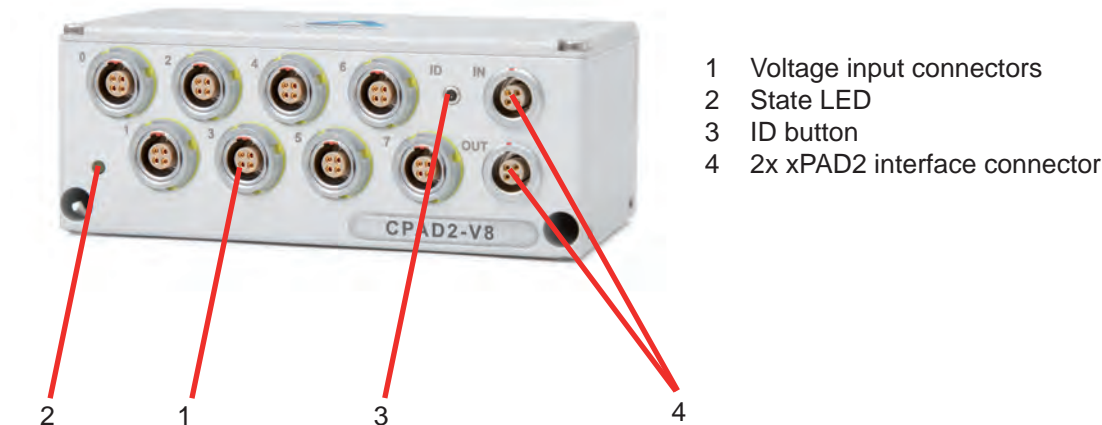
* Dimensions in mm
(1 inch = 25.4 mm)

EPAD2/CPAD2-V8-L1B Module

Push button

Use the ID button to define the module address via software. Detailed information how to use the button is available in chapter: "Installing EPAD2/CPAD2 modules in DEWESoft, Module reset".

Connection

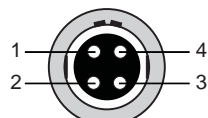


Voltage input connector

The xPAD2-V8-L1B module offers 8 differential voltage input channels.



ECA.1B.304



Schematic

Pin assignment:

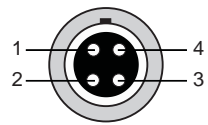
- 1 Power supply (+)
 - 2 IN (+)
 - 3 IN (-)
 - 4 Power supply (-)
- Shield is on housing

xPAD2 interface connector

This connector can be used to connect the module to the EPAD-BASE2 module or other xPAD2 series



4 pin LEMO series
connector



Schematic

Pin assignment EPAD2:

- 1 RS-485 (A)
- 2 RS-485 (B)
- 3 Power supply (+)
- 4 GND

Pin assignment CPAD2:

- 1 CAN high
- 2 CAN low
- 3 Power supply (+)
- 4 GND

Programming information

The xPAD2-V8-L1B programming information is available in the *DEWE-MODULES Programmers Reference Manual*.

EPAD2/CPAD2-V8-L1B Module

Notes

EPAD2/CPAD2-RTD8-L1B Module

8 channel Resistance Temperature Detector amplifier

- Amplifier with integrated 24-bit A/D conversion
- 8 isolated Resistance Temperature Detector channels
- RS-485 or CAN interface

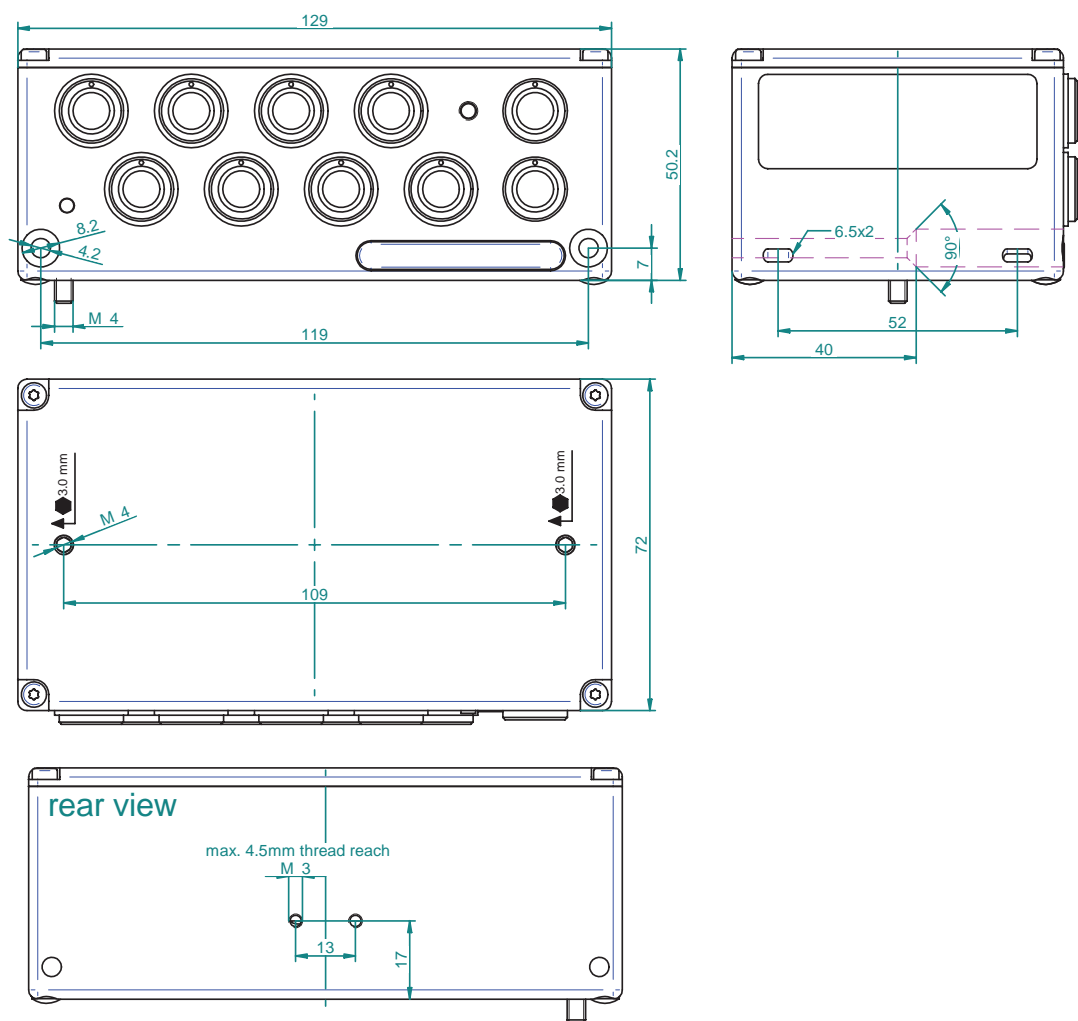


Module specifications

xPAD2-RTD8-L1B			
Input channels	8 isolated Resistance Temperature Detector channels		
Input ranges	Resistor: 0 to 999.99Ohm RTD: PT100(385); PT200(385); PT500(385); PT1000(385); PT2000(385); PT100(3961)		
Accuracy	Pt100 a = 0.00385	Pt100 a = 0.003916	Pt200 a = 0.00385
	±0.25 °C @ -200 to 100 °C	±0.25 °C @ -200 to 100 °C	±0.25 °C @ -200 to 100 °C
	±0.4 °C @ 100 to 400 °C	±0.4 °C @ 100 to 400 °C	±0.4 °C @ 100 to 400 °C
	±0.8 °C @ 400 to 800 °C	±0.8 °C @ 400 to 800 °C	±0.5 °C @ 400 to 630 °C
	Pt500 a = 0.00385	Pt1000 a = 0.00385	Pt2000 a = 0.00385
	±0.25 °C @ -200 to 100 °C	±0.25 °C @ -200 to 100 °C	±0.25 °C @ -200 to 100 °C
	±0.4 °C @ 100 to 250 °C	±0.4 °C @ 100 to 400 °C	±0.4 °C @ 100 to 200 °C
		±0.8 °C @ 400 to 600 °C	
Resistance accuracy	0.03 % of reading ±0.1 Ω		
Sampling rate	max. 12.5 S/sec per channel		
Bandwidth (-3 dB)	6 Hz		
ADC type	24 bit Delta Sigma Converter		
Input connector	ERA.1S.304		
Connection type	2-wire, 4wire		
Noise	typically 0.02 °C		
Resolution	0.01 °C for all types		
Constant current	400 µA		
Input impedance	typically >100 MΩ		
Bias current	typically 10 nA		
Sensor fault detection	module indicates fullscale if input is open		
Max. gain drift	25 ppm /°C		
Max. offset drift	25 ppm of range /°C		
Isolation voltage	350 V _{DC} (channel to channel and channel to Bus, Power and Chassis)		
Overvoltage protection	15 V _{DC}		
CMRR (50/60 Hz)	130 dB		
EPAD2-RTD8			
Interface	RS-485		
Communication speed	9600 bps (2400 to 115200 programmable)		
Standard settings	9600 bps, 8 data bits, 1 stop bit, no parity, module address 00 hex		
Readout speed	depending on baudrate and number of channels (typ. 80 ch/sec. @ 9600 bps)		
CPAD2-RTD8			
Interface	highspeed CAN		
Specification	CAN 2.0B		
Communication speed	50 kBaud to 1000 kBaud		
Data format	16 bit Intel or Motorola		
Identifier types	standard; extended		
Standard settings	500 kBaud; Intel Format		
Readout speed	12.5 Hz, 10 Hz, 5 Hz, 2 Hz, 1 Hz, 0.5 Hz, 0.2 Hz or 0.1 Hz programmable		
Bus/Power Connector	LEMO EGG.1B.304		
Power Supply Voltage	7 to 40 V		
Power consumption	typically 0.5 W		
Dimensions			
Base module (W x D x H)	129 x 72 x 50.2 mm (5.1 x 2.8 x 2 in.) incl. mounting holes		
Mounting holes distance	119 x 7 mm (4.7 x 0.3 in.), 4.2 mm (0.165 in.) diameter		
Weight	typical 420 g		

EPAD2/CPAD2-RTD8-L1B Module

Dimensions*



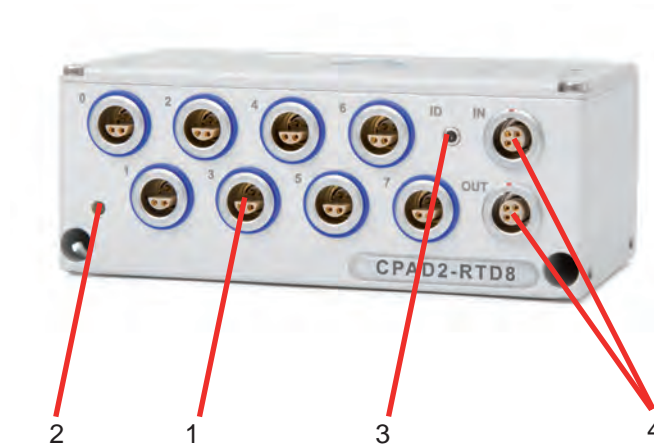
* Dimensions in mm
(1 inch = 25.4 mm)

EPAD2/CPAD2-RTD8-L1B Module

Push button

Use the ID button to define the module address via software. Detailed information how to use the button is available in chapter: "Installing EPAD2/CPAD2 modules in DEWESoft, Module reset".

Connection



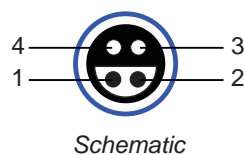
- 1 RTD input connectors
- 2 State LED
- 3 ID button
- 4 2x xPAD2 interface connector

RTD input connector

The xPAD2-RTD8-L1B module offers 8 isolated Resistor Temperature Detector input channels.



ERA.1S.304.CLL



Schematic

Pin assignment:

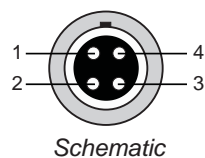
- 1 Excitation (+)
 - 2 Sense (+)
 - 3 Sense (-)
 - 4 Excitation (-)
- Shield is on housing

xPAD2 interface connector

This connector can be used to connect the module to the EPAD-BASE2 module or other xPAD2 series



4 pin LEMO series connector



Schematic

Pin assignment EPAD2:

- 1 RS-485 (A)
- 2 RS-485 (B)
- 3 Power supply (+)
- 4 GND

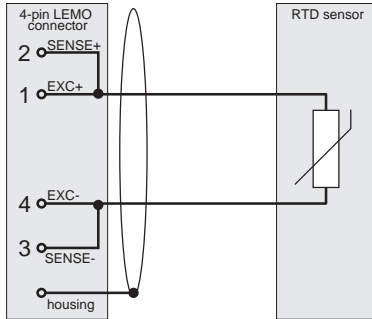
Pin assignment CPAD2:

- 1 CAN high
- 2 CAN low
- 3 Power supply (+)
- 4 GND

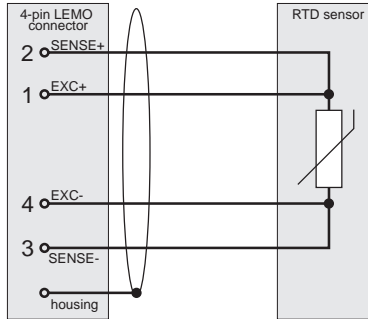
EPAD2/CPAD2-RTD8-L1B Module

Sensor connection

2-wire connection



4-wire connection



Programming information

The xPAD-RTD8-L1B programming information is available in the *DEWE-MODULES Programmers Reference Manual*.

EPAD2/CPAD2-TH8-P Module

8 channel thermocouple and RTD amplifier

- Intelligent amplifier with integrated 24-bit A/D conversion
- 8 galvanically isolated input channels
- External CJC
- Automatic sensor block detection
- Signal connection via 25-pin SUB-D connector
- Supported breakout boxes:
 - PAD-CB8-x-P2: standard thermocouple breakout box
 - PAD-CB8-x-M: small size thermocouple breakout box
 - PAD-CB8-RTD: RTD breakout box

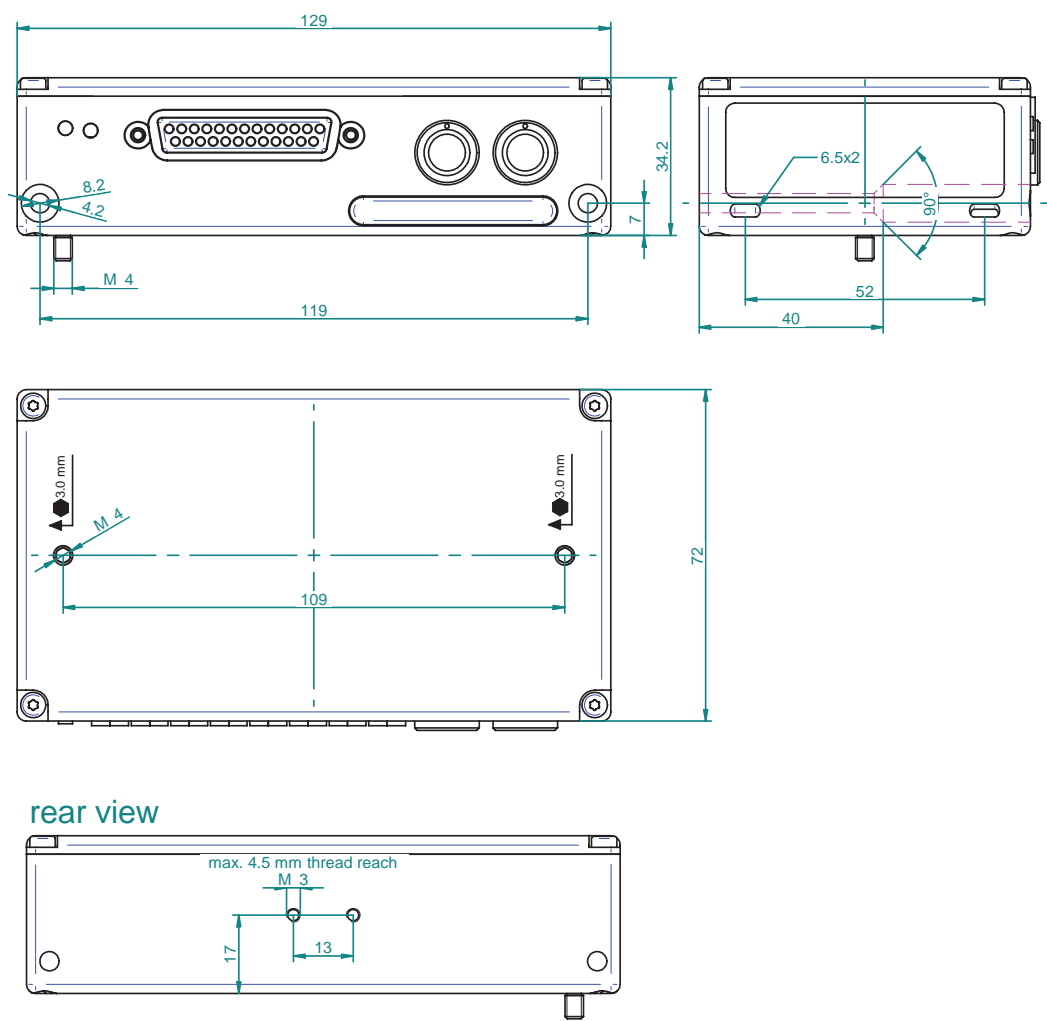


Module specifications

xPAD2-TH8-P	
Input channels	8 isolated voltage inputs
Input range	± 1.5 V
Sampling rate	max. 12.5 S/sec per channel
Accuracy	0.05 % of reading ± 15 μ V
Bandwidth (-3 dB)	6 Hz
ADC type	24 Bit Delta Sigma Converter
Input connector	SUB-D 25
Resolution	1 μ V
Input impedance	typically 1.4 M Ω
Bias current	typically 10 nA
Max. gain drift	25 ppm / $^{\circ}$ C
Max. offset drift	25 ppm of range / $^{\circ}$ C
Isolation voltage	350 V _{DC} (channel to channel and channel to bus, power and chassis)
Overvoltage protection	15 V _{DC}
CMRR (50/60 Hz)	130 dB
Supported breakout boxes	PAD-CB8-x-P2 standard thermocouple breakout box PAD-CB8-x-M small size thermocouple breakout box PAD-CB8-RTD RTD breakout box
EPAD2-TH8-P	
Interface	RS-485
Communication speed	9600 bps (2400 to 115200 programmable)
Standard settings	9600 bps, 8 data bits, 1 stop bit, no parity, module address 00 hex
Readout speed	depending on baudrate and number of channels (typ. 80 ch/sec. @ 9600 bps)
CPAD2-TH8-P	
Interface	highspeed CAN
Specification	CAN 2.0B
Communication speed	50 kBaud to 1000 kBaud
Data Format	16 Bit Intel or Motorola
Identifier Types	standard; extended
Standard settings	500 kBaud; Intel Format
Readout speed	12.5 Hz, 10 Hz, 5 Hz, 2 Hz, 1 Hz, 0.5 Hz, 0.2 Hz or 0.1 Hz programmable
Bus/Power connector	LEMO EGG.1B.304
Power supply voltage	7 to 40 V
Power consumption	max. 0.5 W
Dimensions	
Base module (W x D x H)	129 x 72 x 34.2 mm (5.1 x 2.8 x 1.3 in.) incl. mounting holes
Mounting holes distance	119 x 7 mm (4.7 x 0.3 in.), 4.2 mm (0.165 in.) diameter
Weight	typical 310 g

EPAD2/CPAD2-TH8-P Module

Dimensions*



* Dimensions in mm
(1 inch = 25.4 mm)

EPAD2/CPAD2-TH8-P Module

General

To use the full power of the xPAD2-TH8-P module, a supported breakout box for RTD and thermocouple sensors should be ordered together with the module.

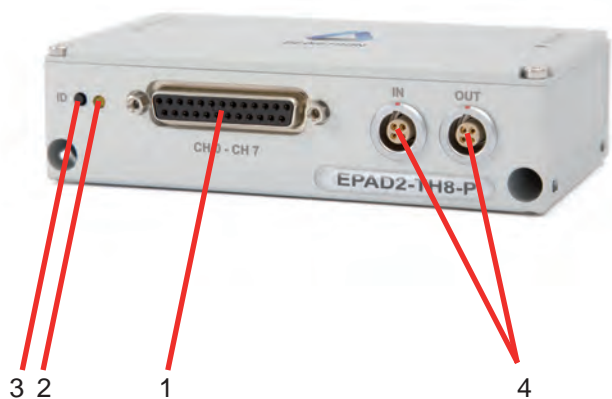
Supported breakout boxes:

PAD-CB8-x-P2	standard thermocouple breakout box
PAD-CB8-x-M	small size thermocouple box
PAD-CB8-RTD	RTD breakout box

Push button

Use the ID button to define the module address via software. Detailed information how to use the button is available in chapter: "Installing EPAD2/CPAD2 modules in DEWESoft, Module reset".

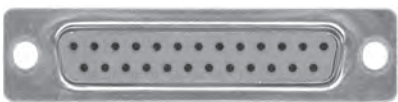
Connection



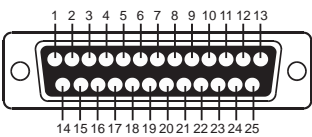
- 1 Voltage input connector
- 2 State LED
- 3 ID button
- 4 2x xPAD2 interface connector

Voltage input connector

The xPAD2-TH8-P module offers 8 differential voltage input channels.



25-pin female DSUB connector



Schematic

Pin assignment:

1	Channel 0	(+)	13	Channel 6	(+)
2	Channel 0	(-)	14	Channel 6	(-)
3	Channel 1	(+)	15	Channel 7	(+)
4	Channel 1	(-)	16	Channel 7	(-)
5	Channel 2	(+)	17	Reserved	
6	Channel 2	(-)	18	Reserved	
7	Channel 3	(+)	19	Reserved	
8	Channel 3	(-)	20	Power supply (+)	
9	Channel 4	(+)	21	Reserved	
10	Channel 4	(-)	22	GND	
11	Channel 5	(+)	23	Reserved	
12	Channel 5	(-)	24	Reserved	
			25	Reserved	

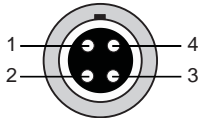
EPAD2/CPAD2-TH8-P Module

xPAD2 interface connector

This connector can be used to connect the module to the EPAD-BASE2 module or other xPAD2 series



4 pin LEMO series connector



Schematic

Pin assignment EPAD2:

- 1 RS-485 (A)
- 2 RS-485 (B)
- 3 Power supply (+)
- 4 GND

Pin assignment CPAD2:

- 1 CAN high
- 2 CAN low
- 3 Power supply (+)
- 4 GND

Programming information

The xPAD2-TH8-P-x programming information is available in the *DEWE-MODULES Programmers Reference Manual*.

EPAD2/CPAD2-LA8-L1B Module

8 channel high precision amplifier for 4 to 20 mA sensors

- Intelligent amplifier with integrated 24-bit A/D conversion
- 8 galvanically isolated input channels
- RS-485 or CAN interface

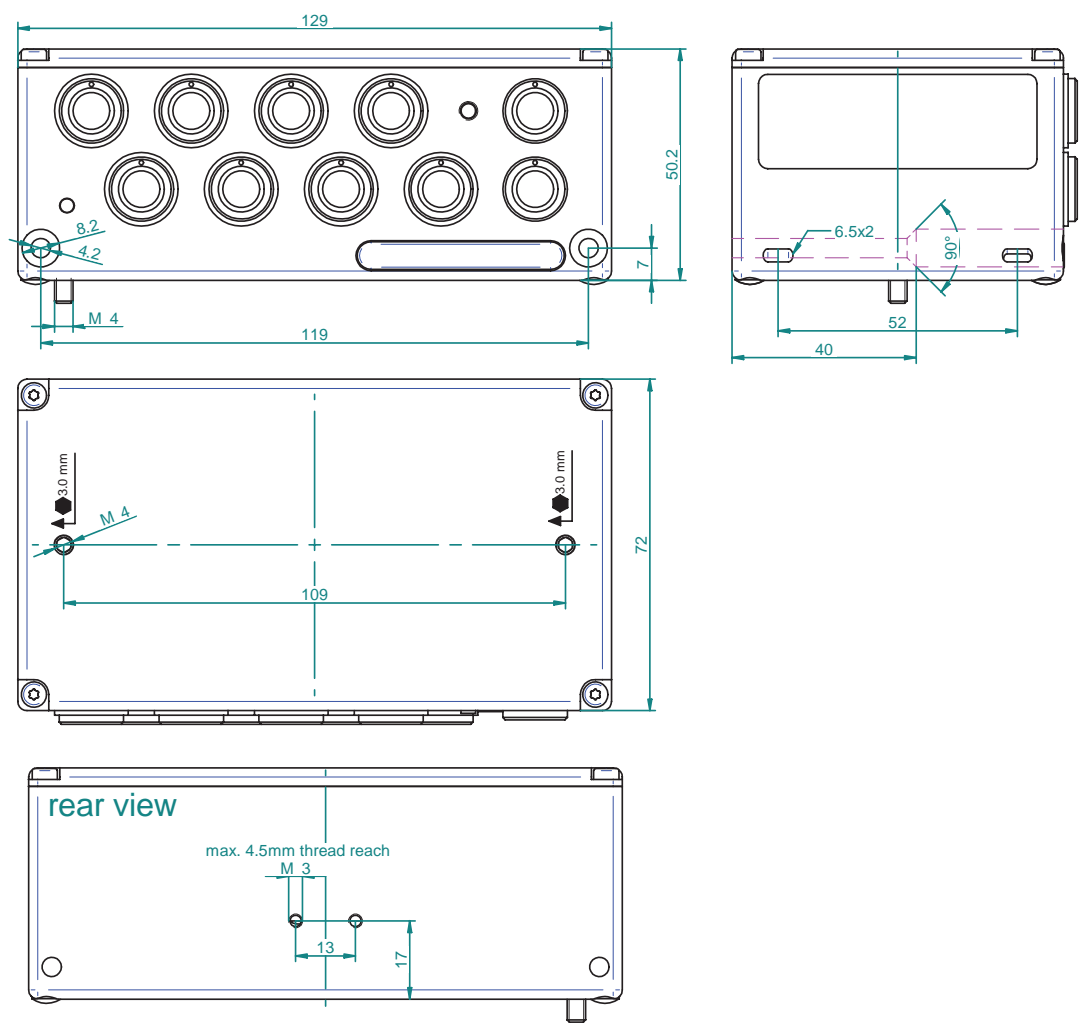


Module specifications

xPAD2-LA8-L1B	
Input channels	8 isolated current inputs
Input range	0 to 20 mA, ± 20 mA; ± 30 mA
Accuracy	0.03 % of reading ± 0.3 μ A
Sampling rate	max. 12.5 S/sec per channel
Bandwidth (-3 dB)	6 Hz
ADC type	24 bit Delta Sigma Converter
Input connector	LEMO EGB.1B.304
Resolution	0.3 μ A
Input impedance	50 Ω 0.1 %
Max. gain drift	23 ppm / $^{\circ}$ C
Max. offset drift	25 ppm of range / $^{\circ}$ C
Isolation voltage	350 V _{DC} (channel to channel and channel to bus, power and chassis)
Overcurrent protection	70 mA continuous
CMRR (50/60 Hz)	130 dB
EPAD2-TH8-P	
Interface	RS-485
Communication speed	9600 bps (2400 to 115200 programmable)
Standard settings	9600 bps, 8 data bits, 1 stop bit, no parity, module address 00 hex
Readout speed	depending on baudrate and number of channels (typ. 80 ch/sec. @ 9600 bps)
CPAD2-TH8-P	
Interface	highspeed CAN
Specification	CAN 2.0B
Communication speed	50 kBaud to 1000 kBaud
Data format	16 bit Intel or Motorola
Identifier types	standard; extended
Standard settings	500 kBaud; Intel Format
Readout speed	12.5 Hz, 10 Hz, 5 Hz, 2 Hz, 1 Hz, 0.5 Hz, 0.2 Hz or 0.1 Hz programmable
Bus/Power connector	LEMO EGG.1B.304
Power supply voltage	7 to 40 V
Power consumption	max. 0.5 W
Dimensions	
Base module (W x D x H)	129 x 72 x 34.2 mm (5.1 x 2.8 x 1.3 in.) incl. mounting holes
Mounting holes distance	119 x 7 mm (4.7 x 0.3 in.), 4.2 mm (0.165 in.) diameter
Weight	typical 360 g

EPAD2/CPAD2-LA8-L1B Module

Dimensions*



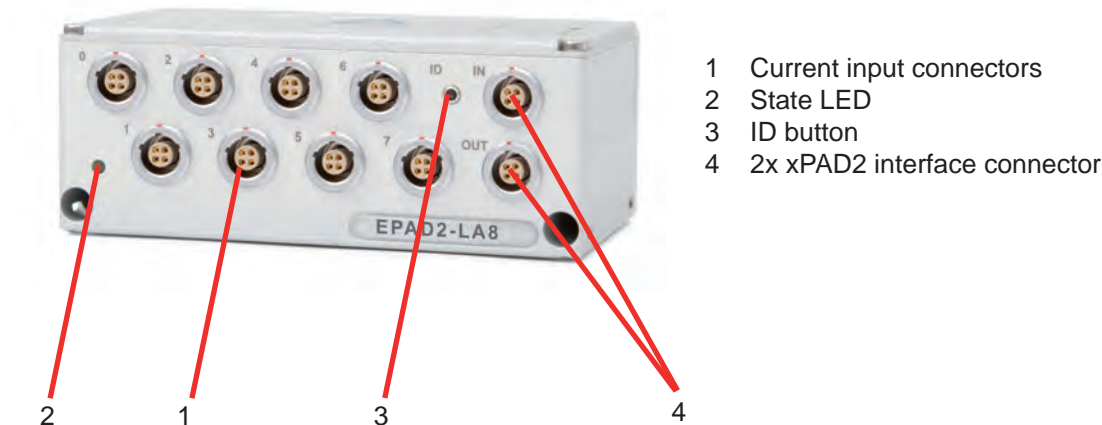
* Dimensions in mm
(1 inch = 25.4 mm)

EPAD2/CPAD2-LA8-L1B Module

Push button

Use the ID button to define the module address via software. Detailed information how to use the button is available in chapter: "Installing EPAD2/CPAD2 modules in DEWESoft, Module reset".

Connection

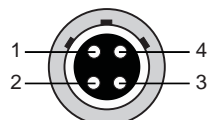


LA input connector

The xPAD2-LA module offers 8 isolated current input channels.



EGB. 1B.304



Schematic

Pin assignment:

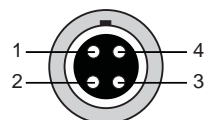
- 1 Power supply (+)
 - 2 Current (+)
 - 3 Current (-)
 - 4 Power supply (-)
- Shield is on housing

xPAD2 interface connector

This connector can be used to connect the module to the EPAD-BASE2 module or other xPAD2 series



4 pin LEMO series connector



Schematic

Pin assignment EPAD2:

- 1 RS-485 (A)
- 2 RS-485 (B)
- 3 Power supply (+)
- 4 GND

Pin assignment CPAD2:

- 1 CAN high
- 2 CAN low
- 3 Power supply (+)
- 4 GND

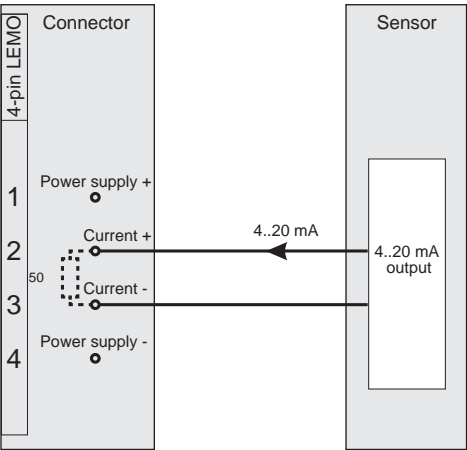
Programming information

The xPAD2-RTD8 programming information is available in the *DEWE-MODULES Programmers Reference Manual*.

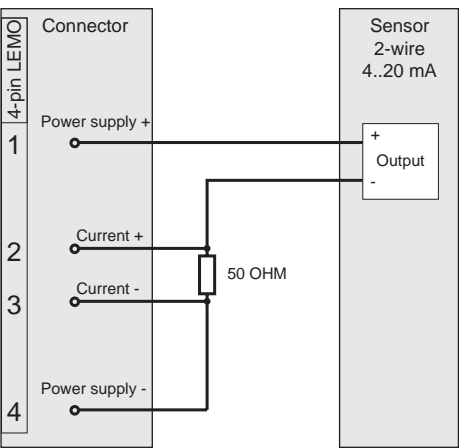
EPAD2/CPAD2-LA8-L1B Module

Signal connection

Current measurement (4 to 20 mA loop)



Loop powered sensor



EPAD2-AO4 Module

4 channel analog output module

- 4 channel analog output
- RS-485 interface



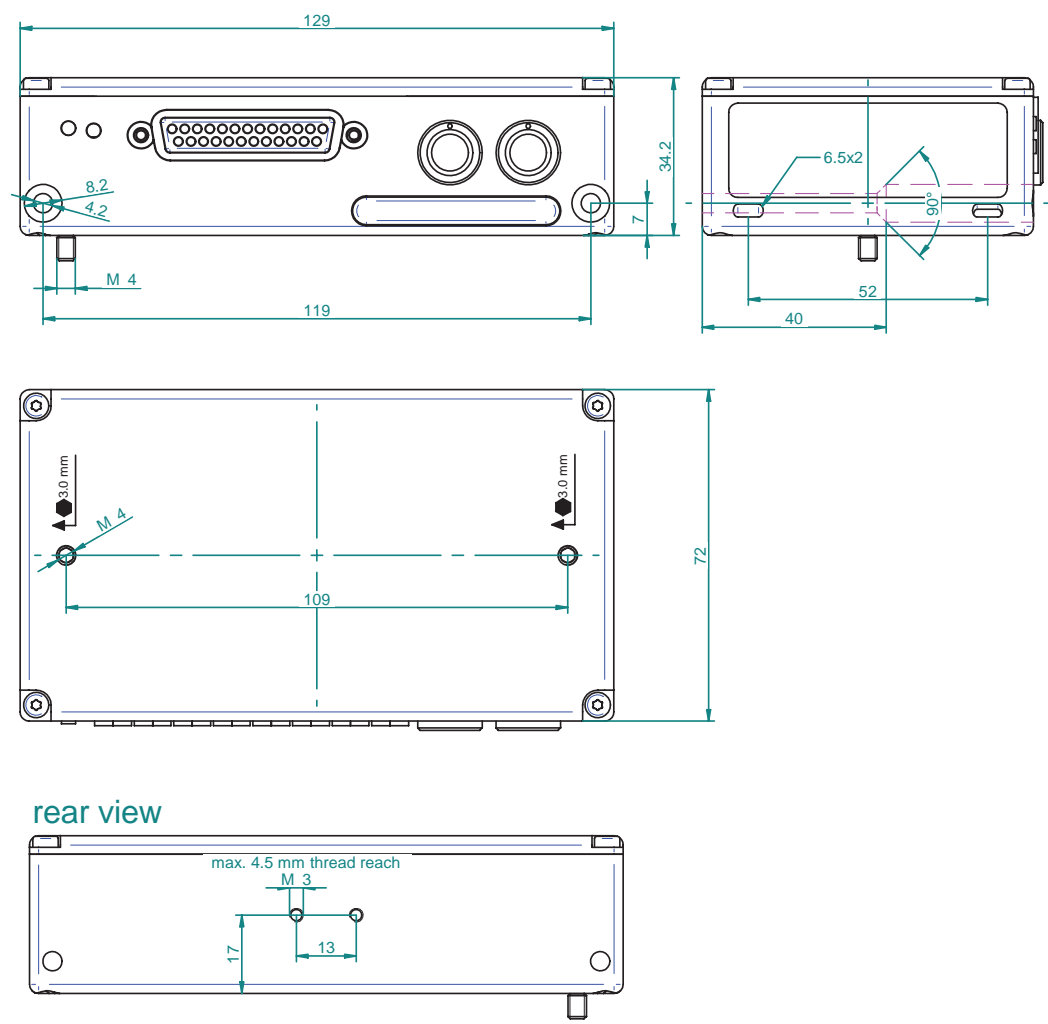
Module specifications

EPAD2-AO4	
Output channels	4 output channels
Output modes	Voltage output or current output; current sinking only
Output ranges	± 10 V; ± 5 V; 0 to 5 V; 0 to 10 V; 0 to 20 mA; 4 to 20 mA
Resolution	± 0.02 % of full scale
DC accuracy	± 0.1 % of full scale
Voltage output	max. load: 5 mA
Current output	max. external compliance voltage: 50 V
Connector	DSUB-25 socket
Isolation voltage	350 V _{DC} (channel to Bus, Power and Chassis)
Channel to channel isolation	not available! all channels have a common ground!
Interface	RS-485
Communication speed	9600 bps (2400 to 115200 programmable)
Standard settings	9600 bps, 8 data bits, 1 stop bit, no parity, module address 00 hex
DA output response time	10 ms
Bus/Power connector	LEMO EGG.1B.304 sockets
Power supply voltage	10 to 30V CAUTION: not standard supply voltage range!
Power consumption	2 W
Dimensions	
Base module (W x D x H)	129 x 72 x 34.2 mm (5.1 x 2.8 x 1.3 in.) incl. mounting holes
Mounting holes distance	119 mm (4.7 in.), 4.2 mm (0.165 in.) diameter
Weight	typ. 310 g

NOTE: There is no CPAD2 version available with this module!

EPAD2-AO4 Module

Dimensions*



* Dimensions in mm
(1 inch = 25.4 mm)

EPAD2-AO4 Module

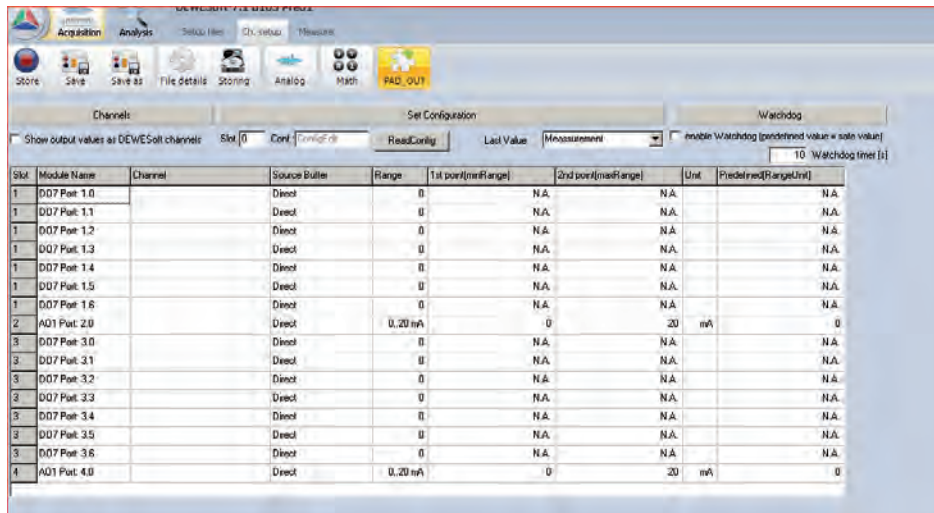
Push button

The ID button is used to RESET the module. To reset the module just unplug all cables from the module. Press and hold the ID button. Plug-in the RS-485 to power up the module. Now the module is set to standard settings.

NOTE:

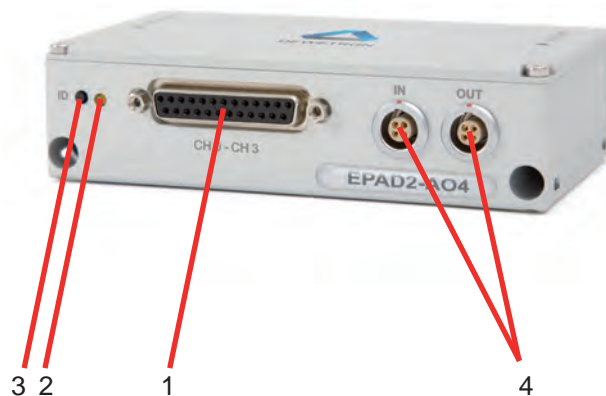


To run the EPAD2-AO4 module in DEWESoft™ the plugin "PAD out (AO1, AO4, DO7) plugin" must be installed. Further information regarding plugin installation and setup of the EPAD-AO4 module please refer to the "PAD out (AO1, AO4, DO7) plugin" technical reference manual.



PAD OUT plugin setup screen

Connection

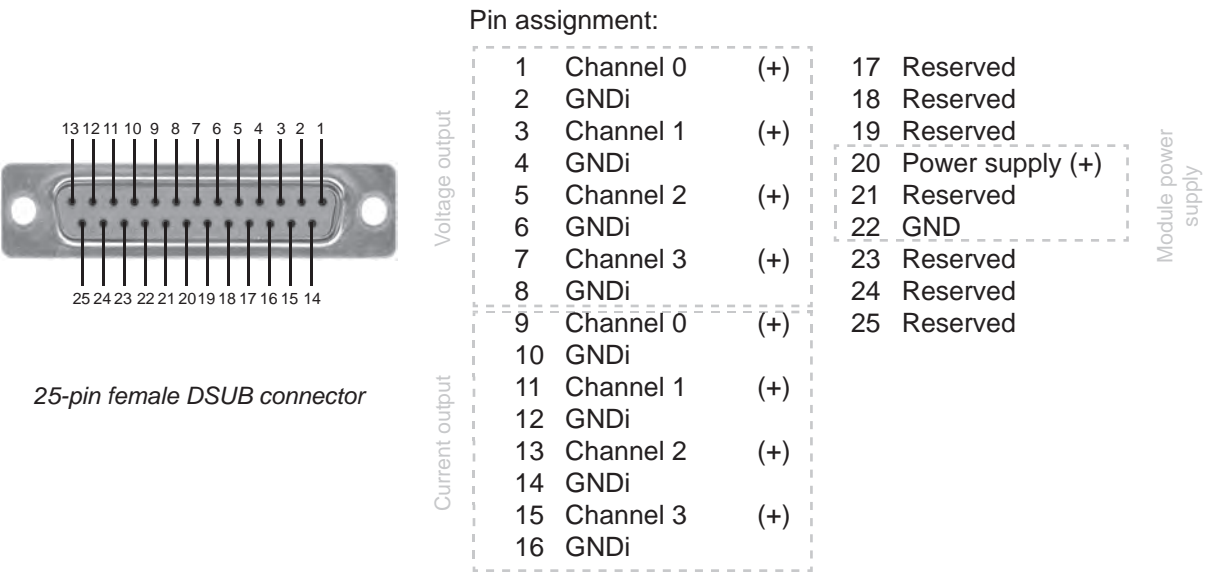


- 1 Analog output connector
- 2 State LED
- 3 ID button
- 4 2x EPAD2 interface connector

EPAD2-AO4 Module

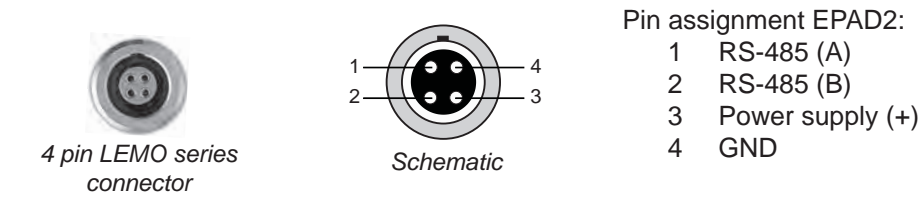
Analog output connector

The EPAD2-AO4 module offers 4 differential voltage/current output channels.

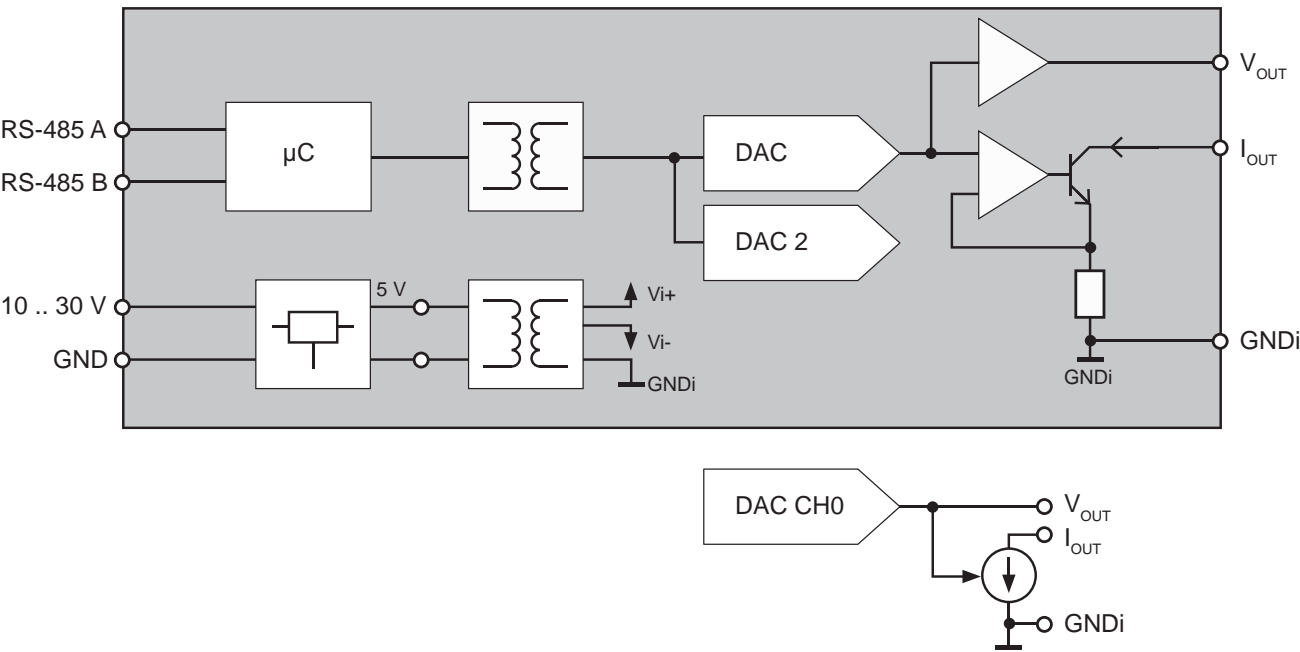


xPAD2 interface connector

This connector can be used to connect the module to the EPAD-BASE2 module or other xPAD2 series

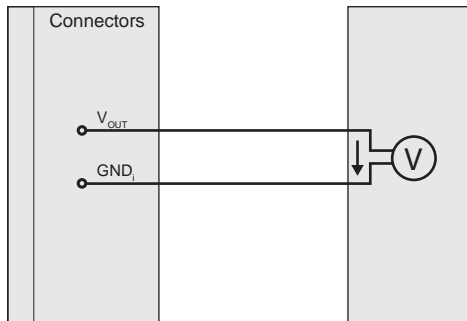


Blockdiagram

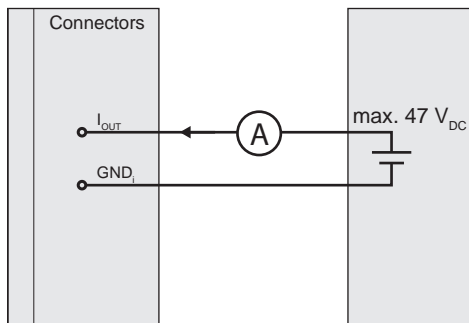


Signal connection

Voltage output



Current output



EPAD2-AO4 Module

Notes

Installing CPAD2/CPAD3 modules

Installing CPAD2/CPAD3 modules in DEWESoft 7.x

NOTE:  Installing CPAD3 modules in DEWESoft is exactly the same as installing any CPAD2 series modules! Figures within this chapter contain CPAD2 screenshots only.

Activate CPAD2/CPAD3 modules

Click on "Settings" > "Hardware Setup" > "CAN"

- Select the CAN device you are using
- Set the CAN Port you use for the CPAD to acknowledge
- Set the CAN Port to CPAD2/CPAD3 in the special devices section.

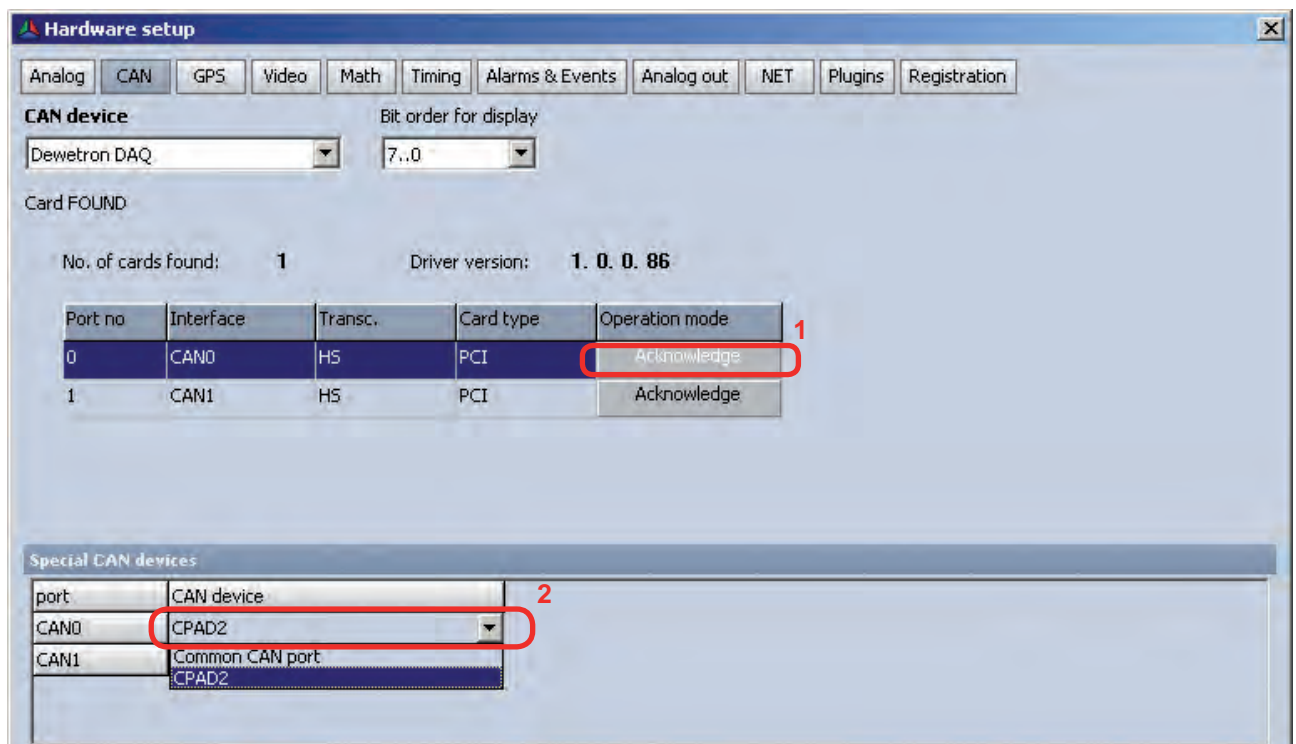


Figure 1: Activate CPAD2/CPAD3 modules

Configuring CPAD2/CPAD3 modules

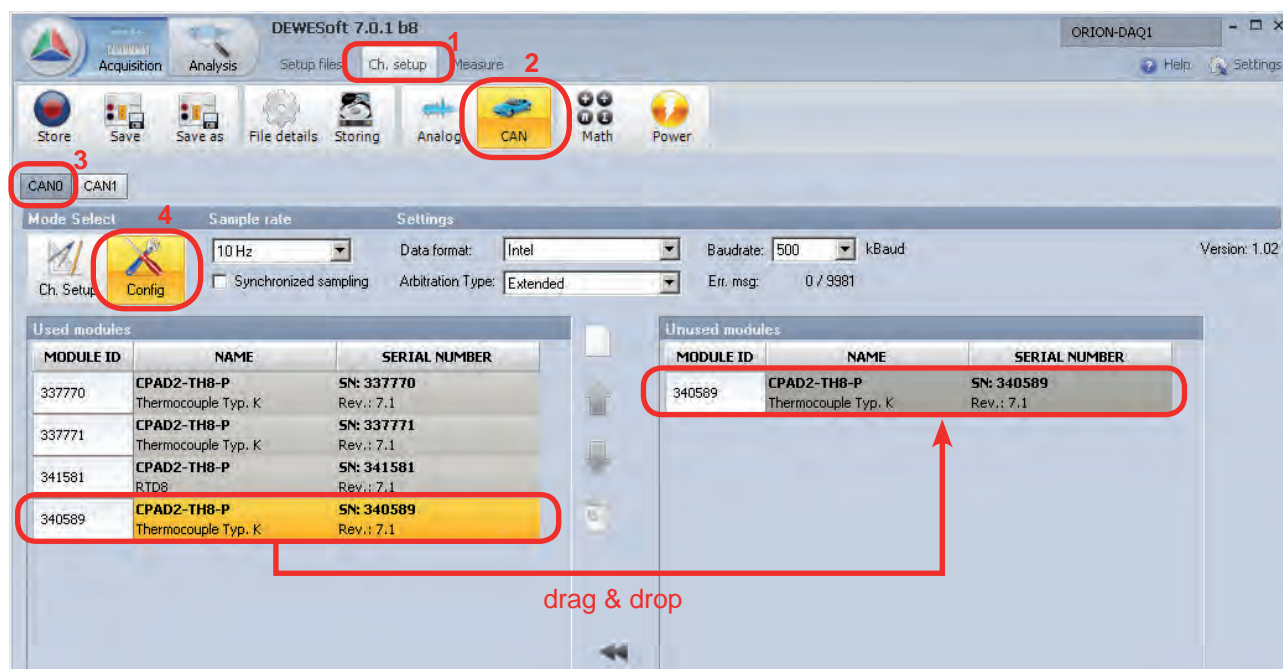
Click on "CH. Setup" > "CAN" > "CANx" > "Config"

Here it is possible to configure your can modules. Automatically all connected CPAD modules should be found in one of the two sections. You can move modules with "drag and drop" from the used to the unused section.

The status LED of the modules will help you to configure the modules:

- LED is on: Module is in the used section
- LED is off: Module is in the unused section
- LED is blinking: Module is selected with the mouse.

Installing CPAD2/CPAD3 modules



Unused modules do not send any data. The sample rate is 0.

All modules listed in the "used modules" are automatically sorted by the module ID.

By default the module ID is the serial number, but it could be changed by clicking on it.

You can change the data format, the arbitration type and the baud rate in the configuration mode.

These settings will be permanently written to the CPAD2/CPAD3 modules. Also after power loss they will start on their new settings.

Error message counter:

The error counter indicates troubles on the CAN Bus. If the red number is permanently increasing instead of being zero, your CAN bus is unstable. In that case you normally also don't see any modules, or you miss a few.

- Check if the termination resistor is on the last CPAD node.
- Probably one CPAD is set to a different baud rate. Change the baud rate setting to different baud rates several times, and check if error message counter stops.
- Check the cabling. Probably your cable is too long for the baud rate. Try to reduce it.



Installing CPAD2 modules

Virtual CPAD2 modules

If you remove a CPAD from the CAN bus it will not disappear but change into the virtual mode. They could be still used in the setup but will not show any data. Immediately when you connect them again they will deliver data again. That even works in the measuring mode. Virtual modules could be added and removed with the buttons:

Remove:  Ad: 

That could be used for:

- Creating offline setups without the hardware.
- Creating a DBC file without the hardware.



Figure 4: Virtual CPAD2/CPAD3 modules

CPAD2 Channel Setup

Click on "CH. Setup" > "CAN" > "CANx" > "Ch. Setup"

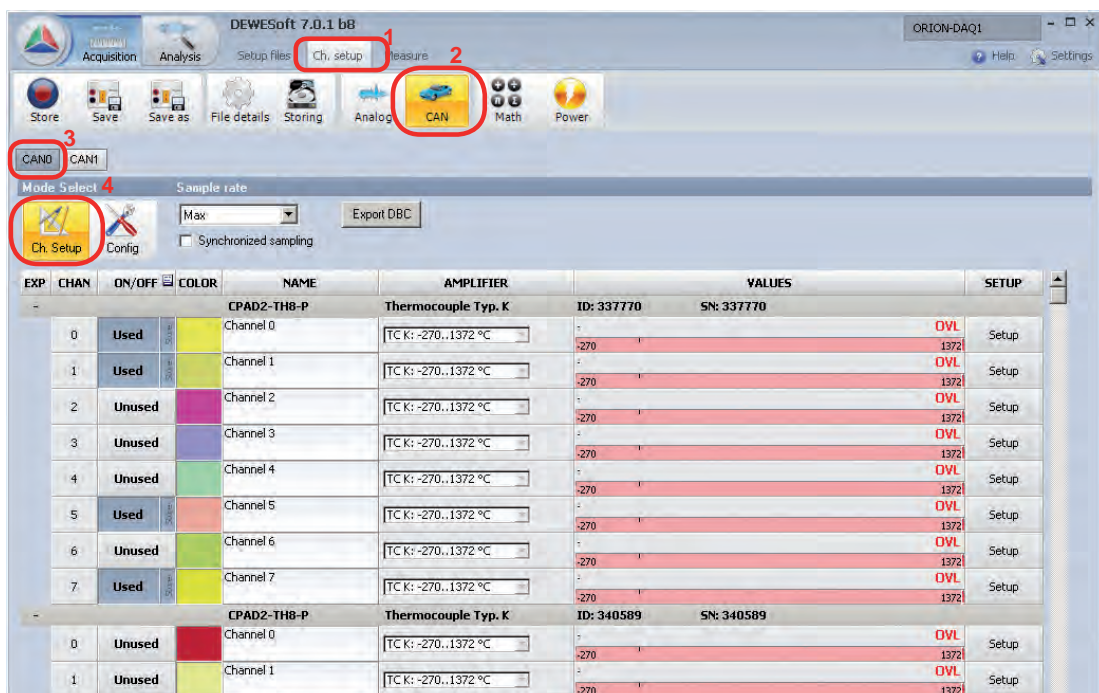


Figure 5: CPAD2 channel setup

Beside DEWESoft standard settings following, settings could be done in the channel setup:

- **CPAD2:** The sampling rate could be changed from **0.1 S/sec to max**. Max means approximately 12.5 S/sec. The status LED flashes with the sample rate during measurement.
- **CPAD3:** The sampling rate could be changed from **0.01 S/sec to 100 S/s**. The status LED flashes with the sample rate during measurement.
- If synchronized sampling is selected all CPAD2/CPAD3 modules acquire the data at the same time. Due to higher bus traffic only 5 S/second are possible in this mode.
- Exporting a DBC will create a DBC file with the actual CPAD2/CPAD3 configuration. This allows you to configure your CPAD2/CPAD3 modules and use them on an external CAN bus easily by importing the DBC file.

Installing EPAD2 modules

Installing EPAD2 modules in DEWESoft 7.x (except EPAD2-AO4, EPAD2-USB)

Activate EPAD modules

Click on "Settings" > "Hardware Setup" > "Analog"

- Select the used COM port from the list
- Check PAD modules in the Amplifier list
- Select the amount of EPAD you want to connect

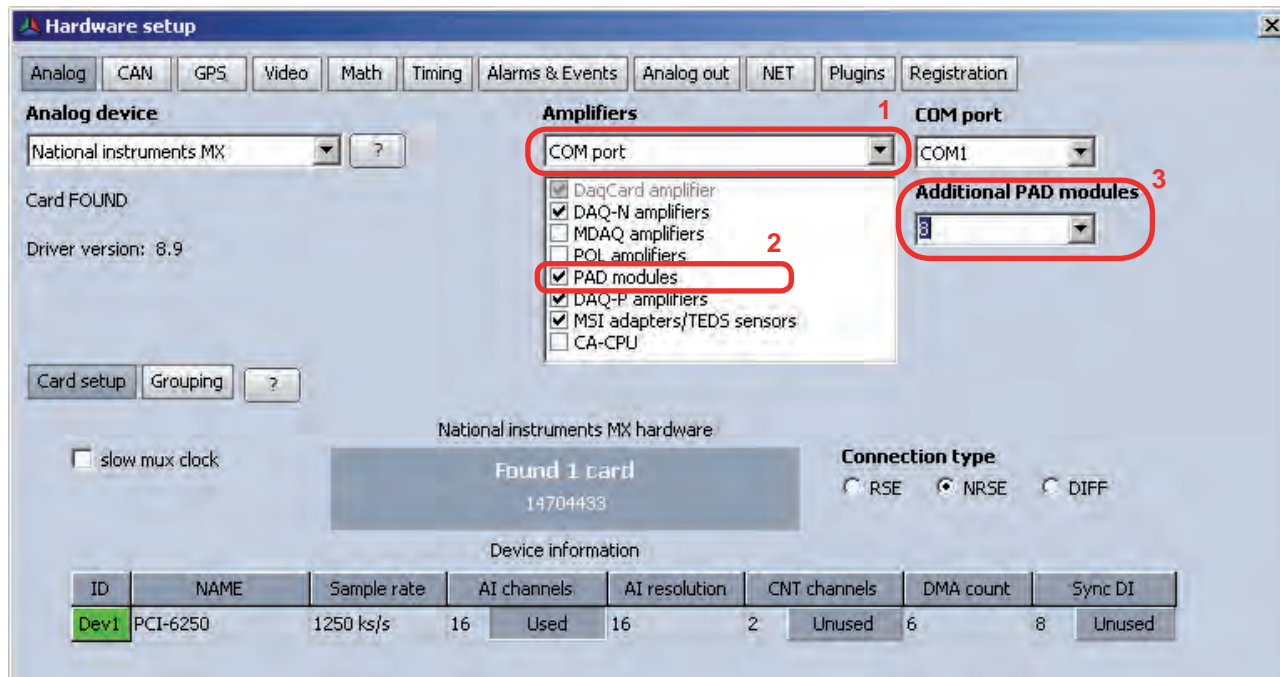


Figure 6: Activate EPAD modules

Assign module address

- Connect the first EPAD to the RS-485 bus.
- Double click in the amplifier column on the slot where you want to assign the EPAD module.
- Press the "Fill" button.

Now the EPAD status LED on all connected EPAD modules should flash. If not, they are probably on a wrong baud rate and a module reset has to be performed. It could also be that the wrong COM port is selected. Press on the ID button on the EPAD module which should be assigned. The EPAD should appear in the amplifier section. Connect the next EPAD and proceed in the same way.

Installing EPAD2 modules

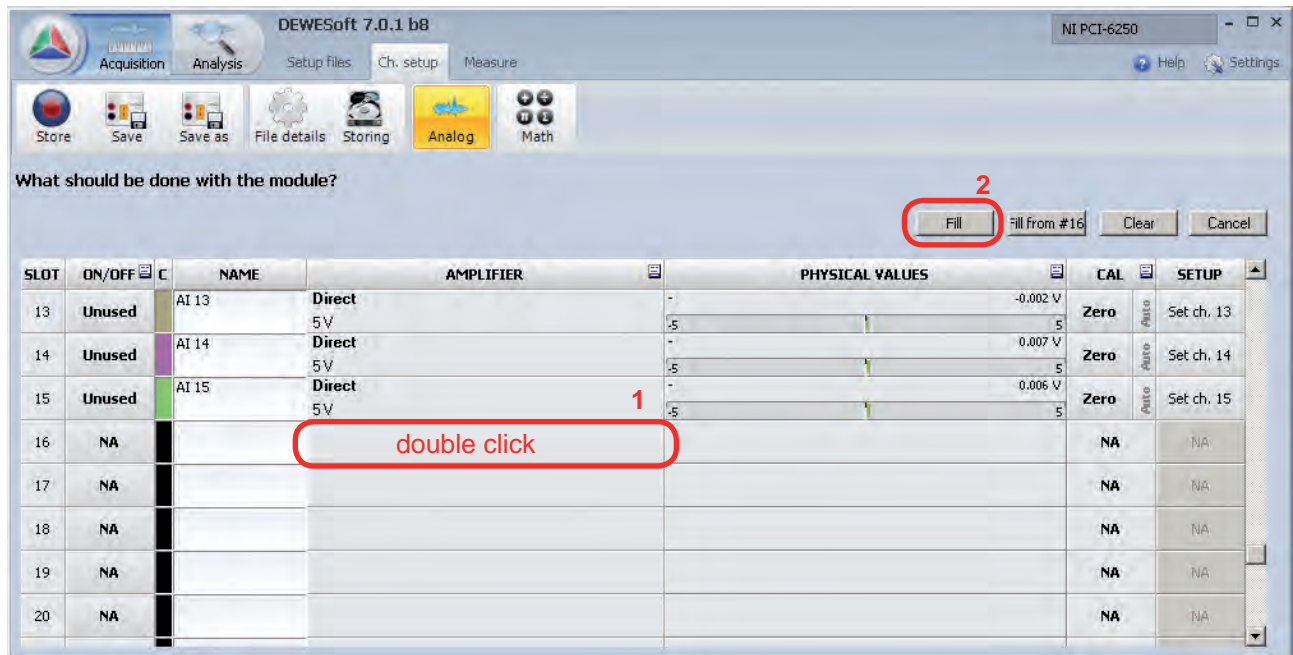


Figure 7: Assign module address

Connecting more than one unaddressed module to the RS485 bus at the same time is not recommended. It might be necessary to do the addressing several times until all modules are on the correct address. In that case it is recommended to press the ID button on the module before you click on the "Fill" button.

Found modules:

By clicking on "Set PAD" you have access to the eight channels of each module.

16	NA		EPAD-TH8-P	SN: 00340589	1372	1372	1372	1372	NA	Set PAD 16
			TC K: -270..1372 °C		1372	1372	1372	1372		
17	NA		EPAD-TH8-P	SN: 00337771	1372	1372	1372	1372	NA	Set PAD 17
			TC K: -270..1372 °C		1372	1372	1372	1372		

Figure 8: "Set PAD"

EPAD module setup

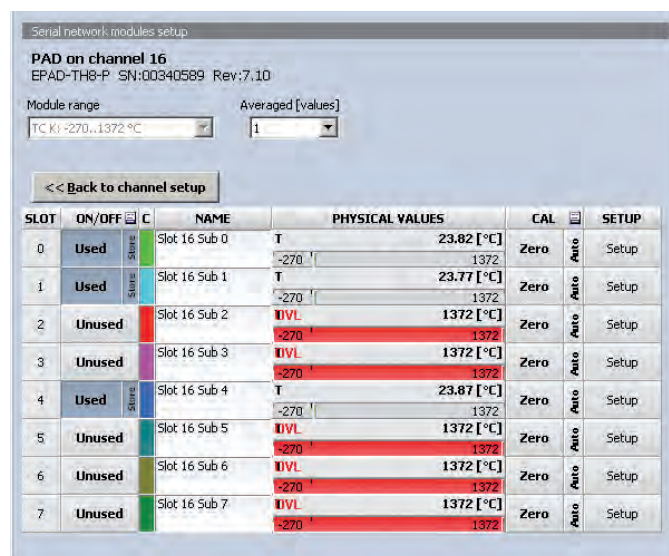


Figure 8: EPAD channel setup

Max. cable length & modules per CAN bus

Maximum Cable Length and Modules per CAN Bus

There are several parameters that have to be considered when building a CAN bus network with CPAD modules.

■ Baud rate

A higher baud rate allows a higher sample rate or using more CPADs. On the other hand, it reduces the maximum cable length.

■ Sample rate

Every baud rate allows a certain aggregated sample rate. Lowering the baud rate allows using more modules at the full sample rate.

■ Cable Length

The baud rate and the number of connected modules limit the cable length. Every module limit the bus length by 2 meter.

■ Number of modules

The maximum is 30 CPADs per bus.

	Baud rate [kbaud]	Sample rate [S/sec]	Recommended maximum	
			Bus cable length [m]	Modules [Pcs.]
CPAD3	1000	100	10	10
	500	100	50	10
	500	50	50	20
	250	100	120	5
	250	50	120	10
	125	100	400	3
	50	100	800	1
CPAD2	1000	10	10	10
	500	10	10	30
	500	10	50	10
	250	10	120	30
	125	10	400	30
	50	10	800	10

Staying below the above mentioned limits allow a stable CAN bus communication. If more modules are required, use a separate CAN bus.



CAUTION: Never set the baud rate higher than the cable length allows. This will end up in an unstable bus. In worst You will have to disconnect and reset the modules one by one in worst case.

Power supply considerations

Power Supply considerations

Depending on the power supply only a certain number of modules can be connected. If longer cables are used this number is reduced because of the cable resistance.

Typical configurations:

12 V, 200 mA (DSUB-9 from ORION board)		
5 m bus length	max. 5 xPAD2 modules	max. 2 CPAD3 modules
50 m bus length	max. 4 xPAD2 modules	max. 2 CPAD3 modules
12 V, 1 A (EPAD connector)		
10 m bus length	max. 20 xPAD2 modules	max. 10 CPAD3 modules
50 m bus length	max. 12 xPAD2 modules	max. 6 CPAD3 modules
100 m bus length	max. 6 xPAD2 modules	max. 3 CPAD3 modules
24 V, 1.5 A (External power supply)		
10 m bus length	max. 60 xPAD2 modules	max. 30 CPAD3 modules
50 m bus length	max. 45 xPAD2 modules	max. 22 CPAD3 modules
100 m bus length	max. 25 xPAD2 modules	max. 12 CPAD3 modules



NOTE: Please consider that the CPAD3 modules do have an increased power consumption (1 W each module). Compared to xPAD2, the amount of CPAD3 modules is reduced by half when using CPAD3 modules only!

Module reset

EPAD2 Module reset:

If the Module could not be detected from the software anymore a possible reason could be that the module has been set to a different address or baud rate. With the reset function you can set the module back to its default settings:

Baud rate: 9600 baud
Checksum: deactivated
Address: 0x00 (this equals a cleared module in Dewesoft)

Procedure: Press the ID button while powering on the module, and keep it pressed for at least 5 seconds.

CPAD2/CPAD3 Module reset:

If the module is not responding on the CAN bus anymore, or you have applied unwanted settings to the module it can be easily set to the default settings.

Identifier type: Extended
Data Identifier: Bit 29 to Bit 25 = 0
Bit 24 to Bit 1: = Module Serial Number
Bit 0: = ChnBit (0 for Channel 0 to 3; 1 for Channel 4 to 7)
Data Format: Intel
Baud Rate: 500 kbaud
Sample Rate: 1 Hz

Procedure: Press the ID button while powering on the module, and keep it pressed for at least 5 seconds. After that the module starts automatically measuring with 1 Sample/Second. The status LED will indicate that by blinking with 1 Hz. The module will send the data of the eight channels with two identifiers that differ in the last bit.

Default Data Identifier Example:

Module Serial Number: 0341581

The module will send the data of channel 0 to 3 on identifier:

$341581 * 2 = 683162 = 0xA6C9A$

Data of channel 5 to 7 on identifier:

$341581 * 2 + 1 = 683163 = 0xA6C9B$

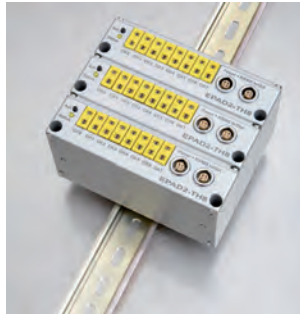
For detailed information how to change the identifier refer to the Programmers manual.

Mounting examples

Mounting examples

The EPAD2/CPAD2/CPAD3 modules are prepared for various mounting options:

- DIN rail



- Cable strap



- Bolt down



For the mounting option "bolt down":
two screws with 4.2 mm diameter are required.

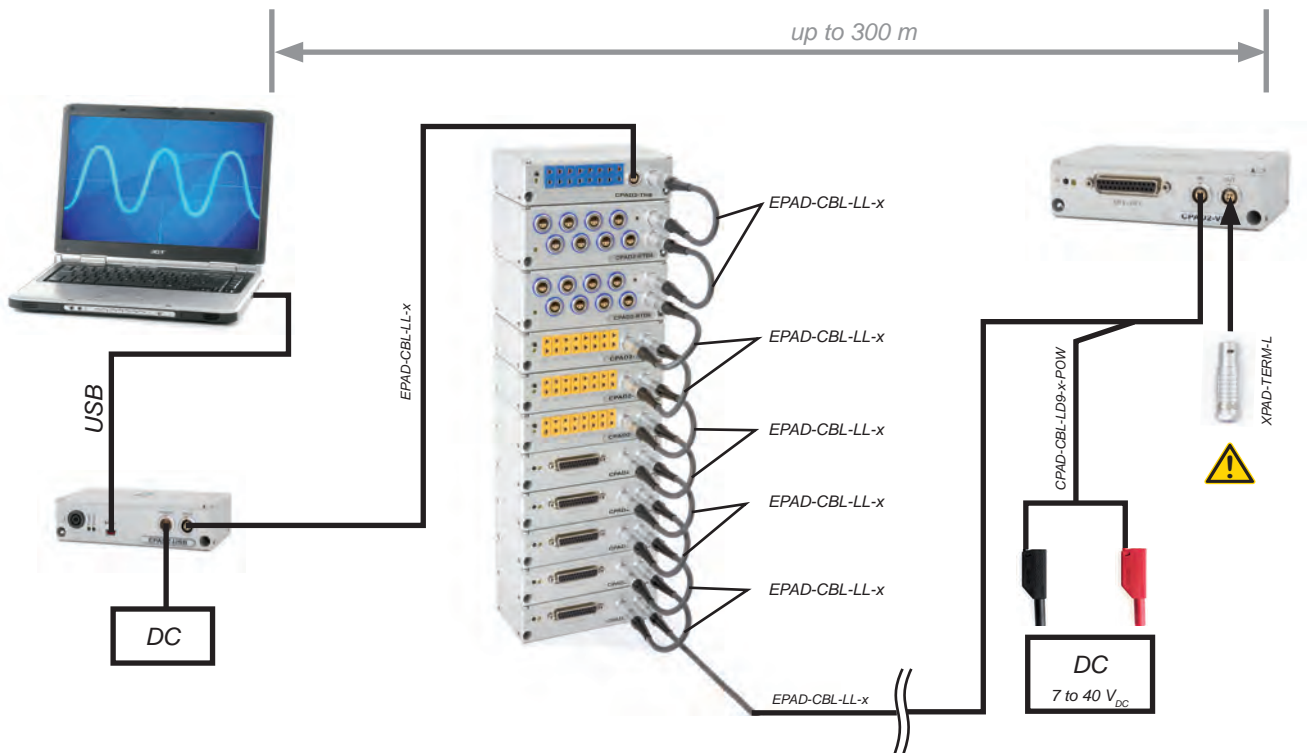
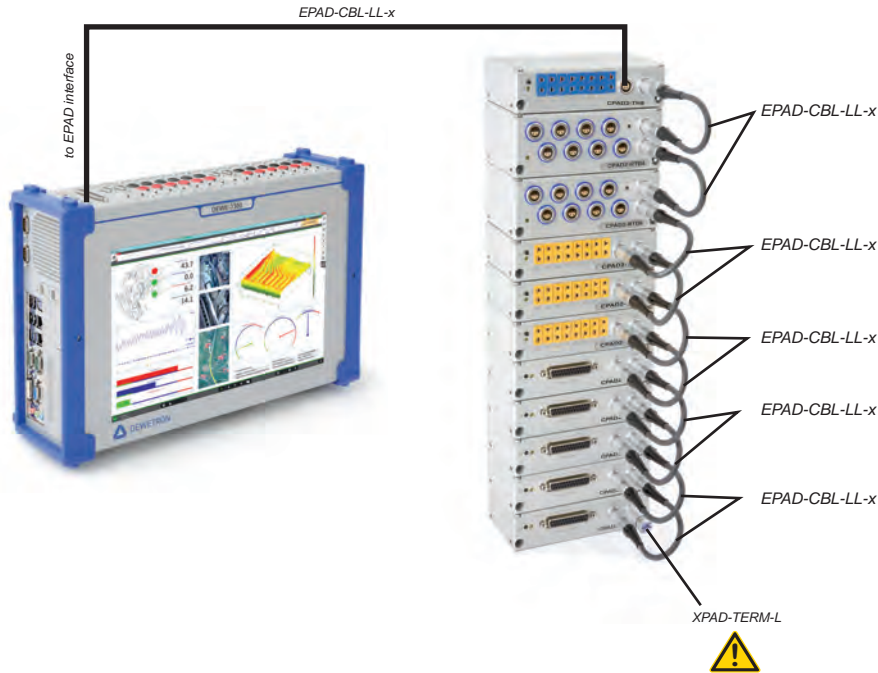
- Stack



For the mounting option "stack":
two long M4 Allen head screws® are required.

Configuration examples

Configuration example with EPAD2 modules



Note: In each case the last DEWE-xPAD2 module has to be terminated!

Note: Due to output resistance with longer cables an external DC power supply might be necessary. In this case, DEWETRON offers the CPAD-CBL-LD9-X-POW cable with two additional banana plugs for 7..40 V_{DC} power supply. Further information see chapter: Accessories & Options.

Configuration examples

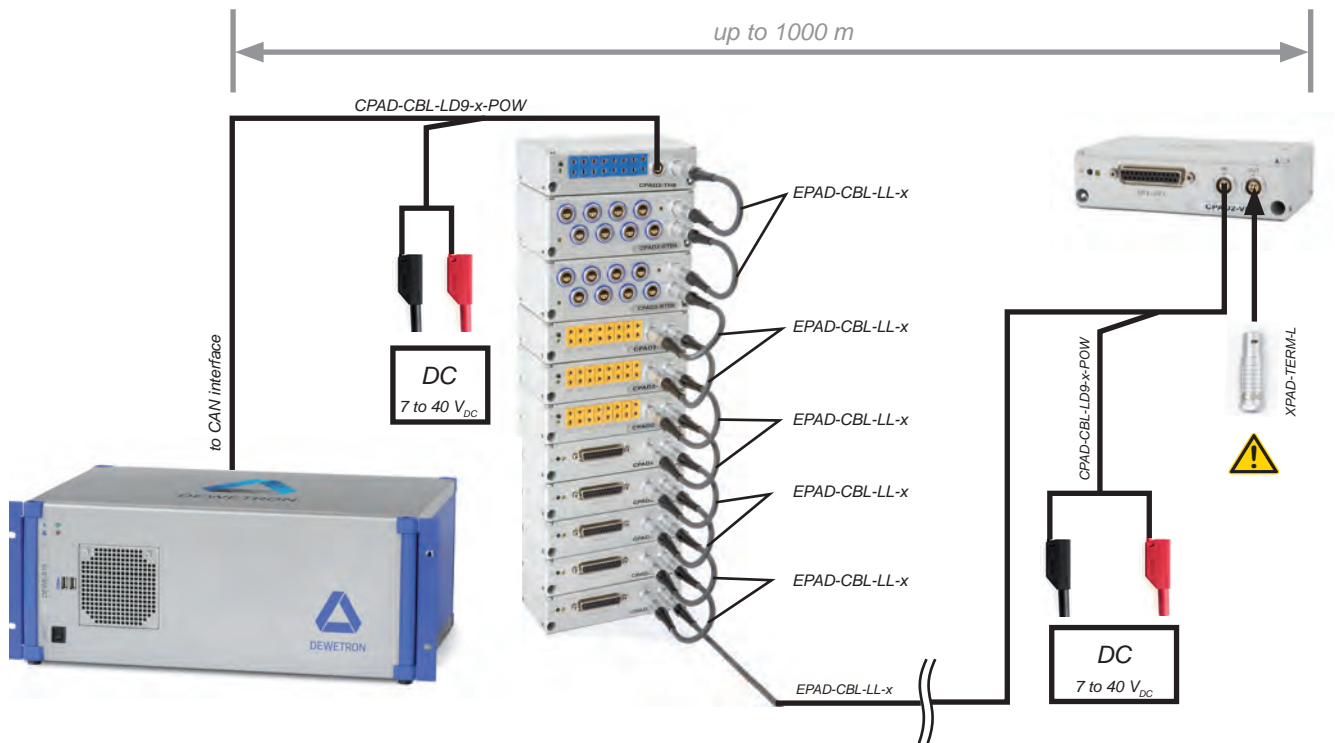
Configuration example with CPAD2/CPAD3 modules



CAN bus length*:

■ 1 Mbit/s:	30 m
■ 800 kbit/s:	35 m
■ 500 kbit/s:	70 m
■ 250 kbit/s:	150 m
■ 125 kbit/s:	400 m
■ 50 kbit/s:	800 m

*) Each additionally connected CPAD2/CPAD3 module reduces the maximum cable length by 2m.



Note: In each case the last xPAD2/CPAD3 module has to be terminated!

Note: Due to output resistance with longer cables an external DC power supply might be necessary. In this case, DEWETRON offers the CPAD-CBL-LD9-X-POW cable with two additional banana plugs for 7..40 V_{DC} power supply. Further information see chapter: Accessories & Options.

Accessories

Accessories & Options

General accessories and options for xPAD2 modules

EPAD-BASE2



Multifunction BASE module for

- connecting EPAD modules to USB - recognizes USB communication losses and reports them back to DEWESoft (native USB device, use with DEWESoft only!)
- connecting EPAD modules to RS-232
- transforming EPAD / PAD data to CAN

LEMO EGG.1B.304 socket for EPAD,

incl. external power supply 100 to 240 VAC / 15 VDC (for up to 16 EPAD modules)

XPAD-TERM-L



Termination connector for xPAD2/CPAD3 modules with Lemo EGG.1B.304 connector, the last module of the RS-485/CAN bus must be terminated with this connector.

XPAD-CBL-LL-0.2



xPAD2/CPAD3 connecting cable 0.2 m with Lemo FGG.1B.304 connector on both sides, for daisy chaining stacked xPAD2/CPAD3 modules.

XPAD-CBL-LL-0.5



xPAD2/CPAD3 connecting cable 0.5 m with Lemo FGG.1B.304 connector on both sides, for connecting xPAD2/CPAD3 series modules to an instrument with Lemo EGG.1B.304 EPAD interface or to EPAD-BASE2 or for daisy chaining xPAD2/CPAD3 modules.

XPAD-CBL-LL-2



xPAD2/CPAD3 connecting cable 2 m with Lemo FGG.1B.304 connector on both sides, for connecting xPAD2/CPAD3 series modules to an instrument with Lemo EGG.1B.304 EPAD interface or to EPAD-BASE2 or for daisy chaining xPAD2 modules

XPAD-CBL-LL-5



xPAD2/CPAD3 connecting cable 5 m with Lemo FGG.1B.304 connector on both sides, for connecting xPAD2/CPAD3 series modules to an instrument with Lemo EGG.1B.304 EPAD interface or to EPAD-BASE2 or for daisy chaining xPAD2/CPAD3 modules

XPAD-CBL-LL-10



xPAD2/CPAD3 connecting cable 10 m with Lemo FGG.1B.304 connector on both sides, for connecting xPAD2/CPAD3 series modules to an instrument with Lemo EGG.1B.304 EPAD interface or to EPAD-BASE2 or for daisy chaining xPAD2/CPAD3 modules

EPAD-ADAP-BL



Adapter cable 0.1 m, converts Binder 712-series plug to Lemo 1B.304 socket

- required to connect new xPAD2 modules to old instruments with Binder 712-series EPAD interface using EPAD-CBL-LL-x cables.
- required to connect EPAD modules with Binder 712-series connector to new instruments with Lemo EGG.1B.304 EPAD interface using EPAD-CBL-LL-x cables.

EPAD-ADAP-LB



Adapter cable 0.1 m, converts from Lemo 1B.304 plug to Binder 712-series socket

- required to connect existing EPAD modules with Binder 712-series connector to new instruments with Lemo EGG.1B.304 EPAD interface using existing EPAD-CBL-BB-x cables.

EPAD-ADAP-D15L



Adapter to convert EPAD interface from SUB-D-15 connector to Lemo 1B.304.

XPAD-DIN-RAIL



Adapter to snap EPAD2 and CPAD2/CPAD3 modules onto a DIN rail.

CPAD-CBL-LD9-2



Adapter cable 2 m to connect CPAD series modules to CAN interface, LEMO FGG.1B.304 plug to a SUB-D-9 socket, use only for DEWETRON systems with power supply on CAN connector.

CPAD-CBL-LD9-2-POW



Adapter cable 2 m to connect CPAD series modules to CAN interface, LEMO FGG.1B.304 plug to a SUB-D-9 socket, additional 2 banana plugs for module power supply.

DEWE-POW-XPAD-24W



24 W external power supply for EPAD-BASE2 & EPAD2-USB module.

Rated input voltage: 100 to 240 V_{AC} (max. 90 to 264 V_{AC})

Output: 15 V_{DC} (1.6 A)

PAD-OPT2

25-pin DSUB connector with screw terminal, for all PAD modules with 25-pin SUB-D socket, except PAD-TH8-P and xPAD2/CPAD3-TH8.

XPAD-OPT-EXT-TEMP

Extended operating temperature range from -40°C to +85°C for EPAD modules

Mating connectors for xPAD2-RTD8 and xPAD2-LA8 modules

LEMO-FFA.1S.304.CLAD42Z

LEMO FFA.1S.304 mating connector, cable diameter 3.1 to 4.0 mm

LEMO-FFA.1S.304.CLAD52Z

LEMO FFA.1S.304 mating connector, cable diameter 4.1 to 5.0 mm

LEMO-FFA.1S.304.CLAD62Z

LEMO FFA.1S.304 mating connector, cable diameter 5.1 to 6.0 mm

Mating connector for xPAD2-V8-L1B module

LEMO-FGA.1B.304.CLADxxZ

LEMO FGA.1B.304 mating connector.

→ Cable diameter 3.1 to 6.0 mm.

CE-Certificate of conformity



Manufacturer:

DEWETRON GmbH

Address:

**Parkring 4
8074 Grambach, Austria**

Tel.: +43 316 3070 0

Fax: +43 316 3070 90

e-mail: sales@dewetron.com

<http://www.dewetron.com>

Name of product:

EPAD2/CPAD2 series modules

Kind of product:

Amplifiers with integrated A/D conversion

The product meets the regulations of the following EC-directives:

73/23/EEC

"Directive on the approximation of the laws of the Member States relating to electrical equipment designed for use within certain voltage limits amended by the directive 93/68/EEC"

89/336/EEC

"Directive on the approximation of the laws of the Member States relating to electromagnetic compatibility amended by the directives 91/263/EEC, 92/31/EEC, 93/68/EEC and 93/97/EEC"

The accordance is proved by the observance of the following standards:

L V E M C	Safety	IEC/EN 61010-1:1992/93 IEC/EN 61010-2-031	IEC 61010-1:1992/300 V CATIII Pol. D. 2 IEC 1010-2-031
	Emissions	EN 61000-6-4	EN 55011 Class B
	Immunity	EN 61000-6-2	Group standard

Graz, April 28, 2010

Place / Date of the CE-marking

Dipl.-Ing. Roland Jeutter / Managing director

Notes

CE-Certificate of conformity



Manufacturer:

DEWETRON GmbH

Address:

**Parkring 4
8074 Grambach, Austria**

Tel.: +43 316 3070 0

Fax: +43 316 3070 90

e-mail: sales@dewetron.com

<http://www.dewetron.com>

Name of product:

CPAD3 series modules

Kind of product:

Amplifiers with integrated A/D conversion

The product meets the regulations of the following EC-directives:

2006/95/EC

"Directive on the approximation of the laws of the Member States relating to electrical equipment designed for use within certain voltage limits."

2004/108/EC

"Directive on the approximation of the laws of the Member States relating to electromagnetic compatibility amended by the directives 89/336/EWG."

The accordance is proved by the observance of the following standards:

L V E M C	Safety	IEC 61010-1:2011 300 V CATII, Pol. Deg. 2	
	Emissions	EN 61000-6-4	EN 55011 Class B
	Immunity	EN 61000-6-2	Group standard

Graz, August 07, 2014

Place / Date of the CE-marking

Ing. Thomas Propst / Manager Total Quality

Notes
